

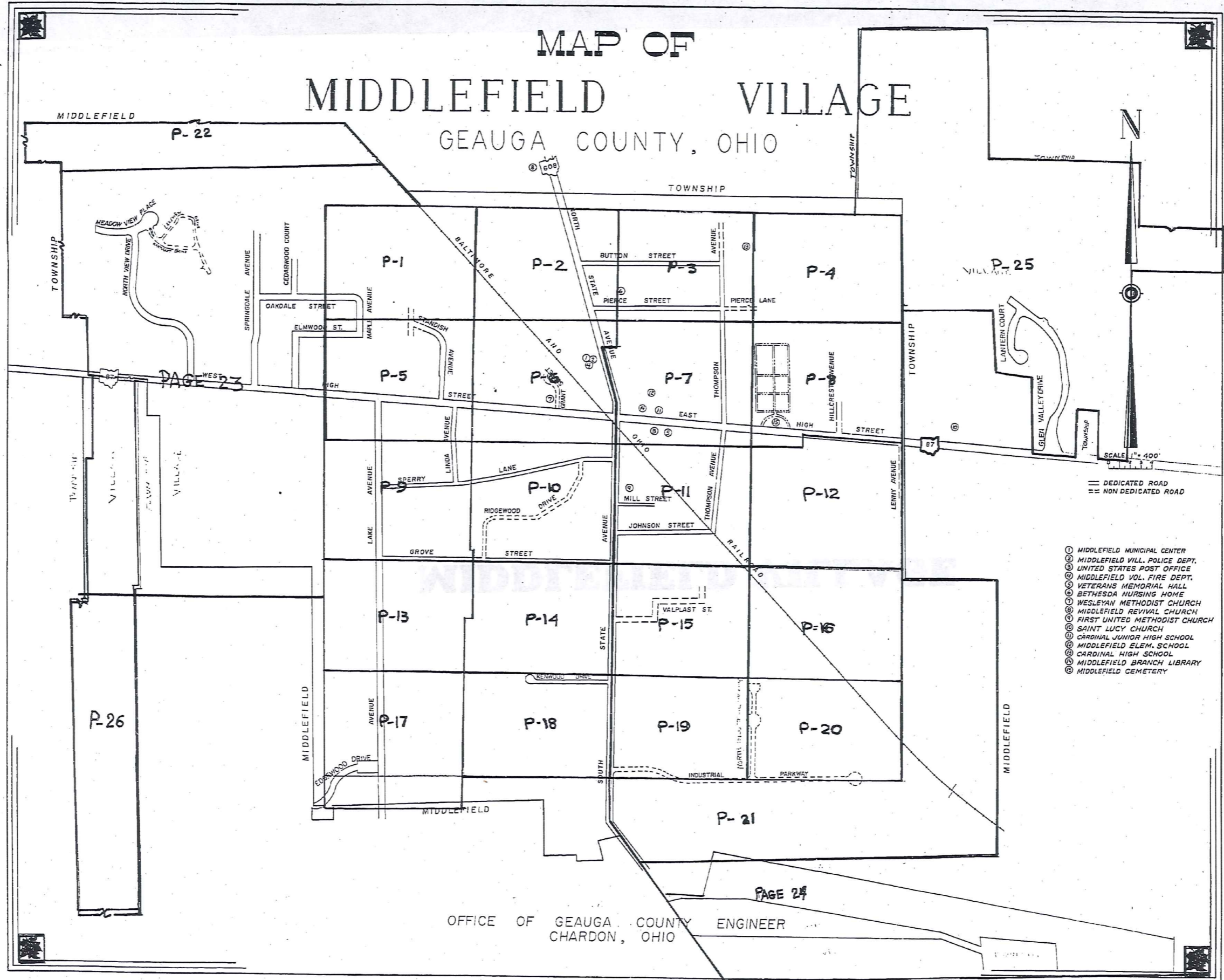


**MIDDLEFIELD VILLAGE**

305

# MAP OF MIDDLEFIELD VILLAGE

GEAUGA COUNTY, OHIO



- ① MIDDLEFIELD MUNICIPAL CENTER
- ② MIDDLEFIELD VILL. POLICE DEPT.
- ③ UNITED STATES POST OFFICE
- ④ MIDDLEFIELD VOL. FIRE DEPT.
- ⑤ VETERANS MEMORIAL HALL
- ⑥ BETHESDA NURSING HOME
- ⑦ WESLEYAN METHODIST CHURCH
- ⑧ MIDDLEFIELD REVIVAL CHURCH
- ⑨ FIRST UNITED METHODIST CHURCH
- ⑩ SAINT LUCY CHURCH
- ⑪ CARDINAL JUNIOR HIGH SCHOOL
- ⑫ MIDDLEFIELD ELEM. SCHOOL
- ⑬ CARDINAL HIGH SCHOOL
- ⑭ MIDDLEFIELD BRANCH LIBRARY
- ⑮ MIDDLEFIELD CEMETERY

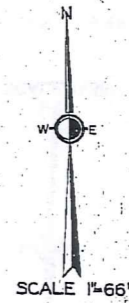
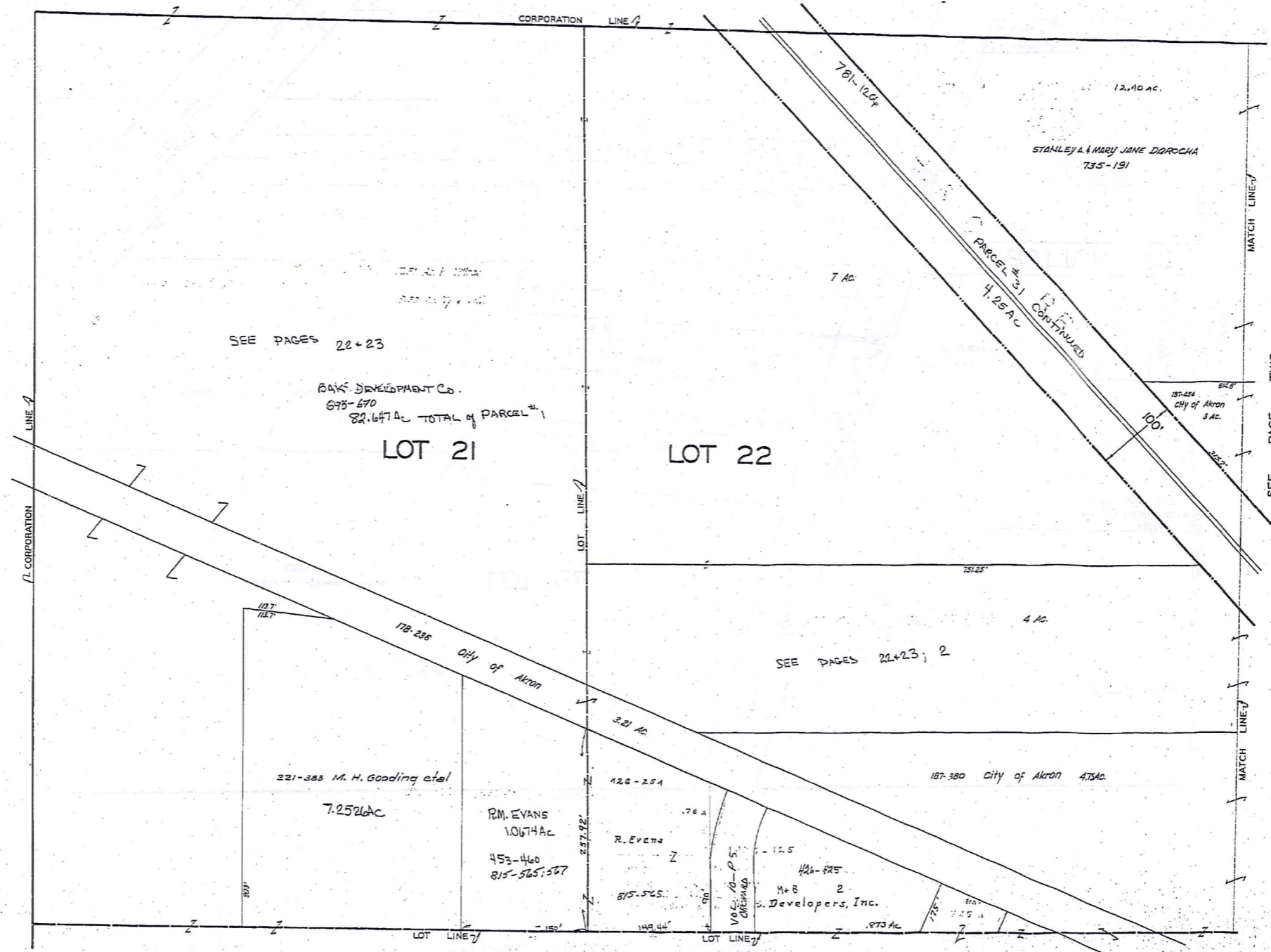
OFFICE OF GEAUGA COUNTY ENGINEER  
CHARDON, OHIO

PAGE 24

PAGE 23

306

MIDDLEFIELD VILLAGE



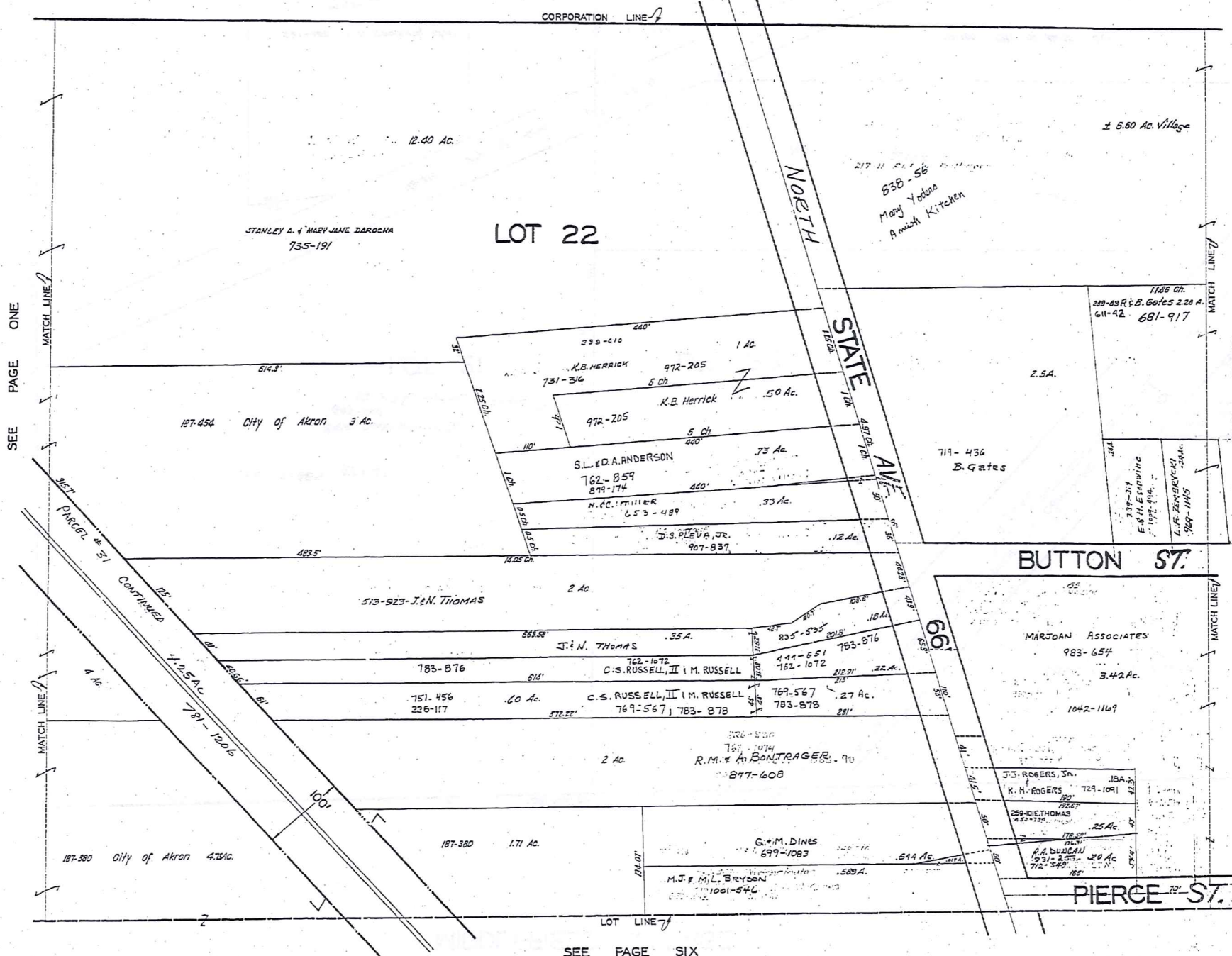
JANUARY 1, 1950

TRM-REDI  
1-800-349-7334  
SCALE IN 1/16 OF AN INCH

RELATIVE REPRESENTATION  
MIDDLEFIELD VILLAGE  
PG. 1

307

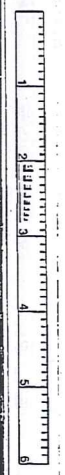
MIDDLEFIELD VILLAGE



SCALE 1"=66'

JAN. 1, 1996

TOWN-REDI  
1-800-345-7334



SCALE IN 7/16" OF AN INCH

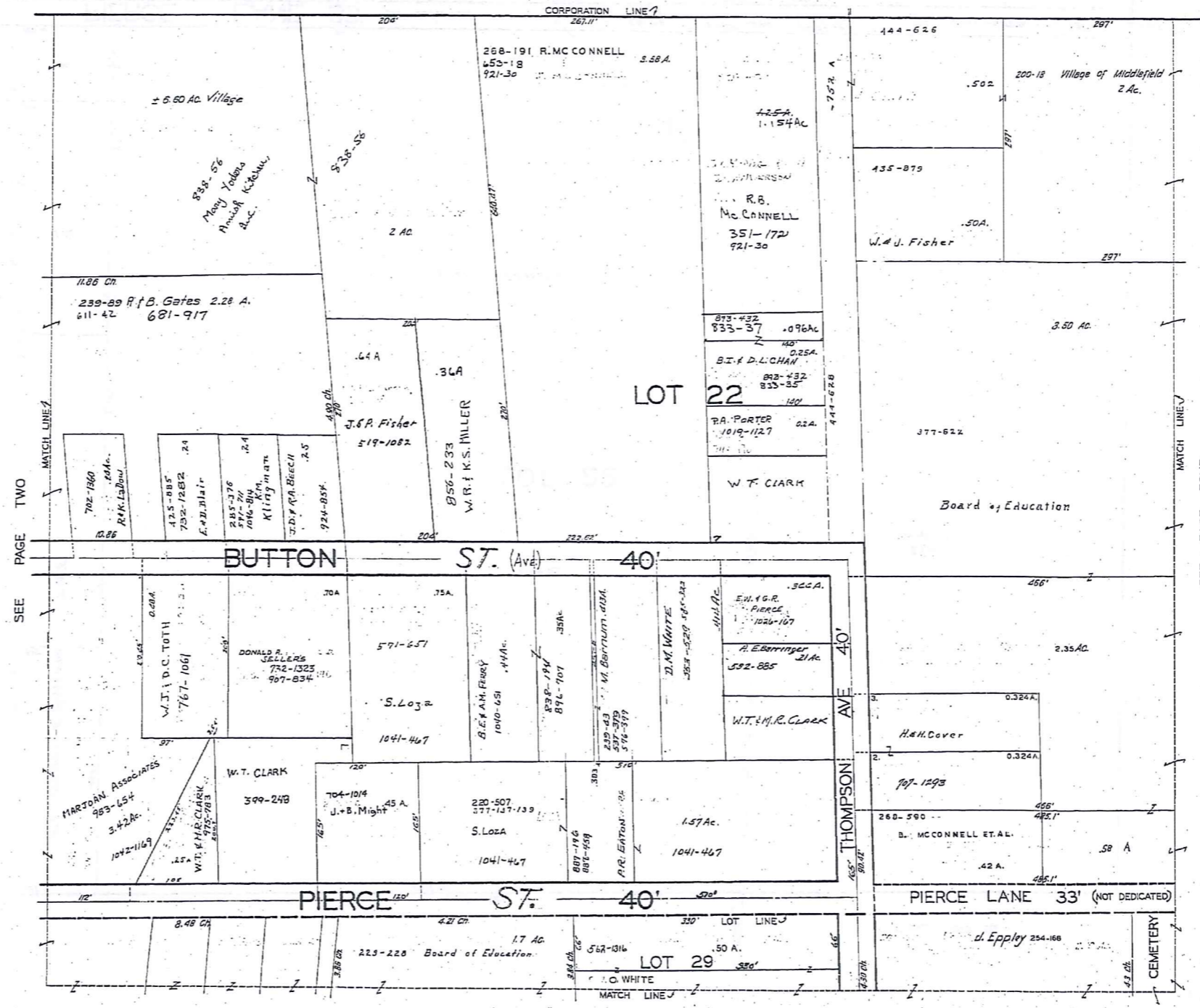
308

SEE PAGE ONE

SEE PAGE THREE

SEE PAGE SIX

309



SEE PAGE TWO

SEE PAGE FOUR

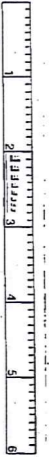
SEE PAGE SEVEN



SCALE 1"=66'

JAN. 1, 1996

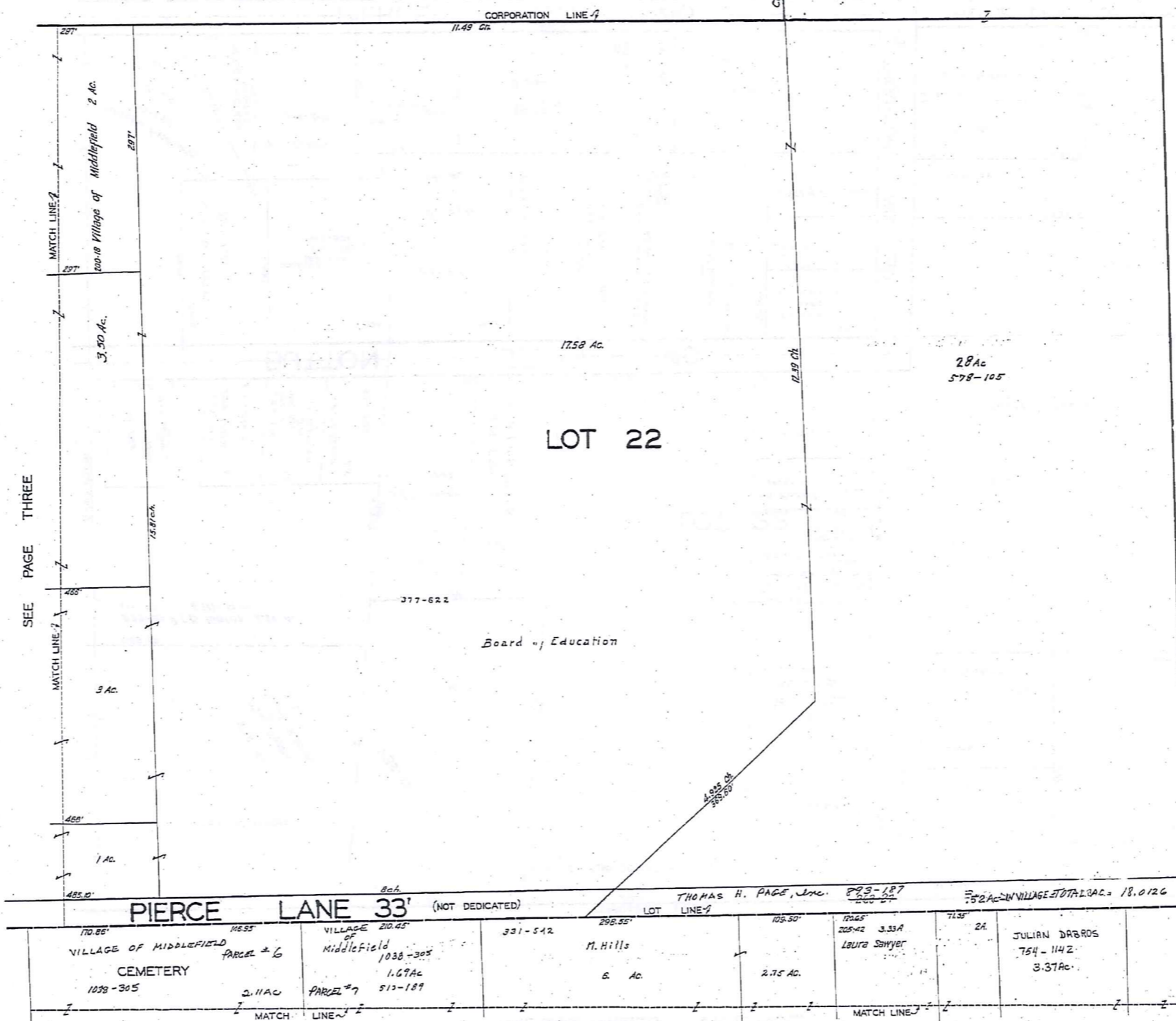
TW-RED  
1-800-345-7334



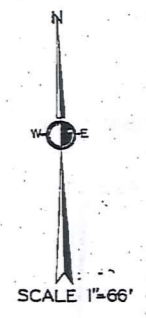
SCALE IN FEET OR INCHES

MIDDLEFIELD VILLAGE

SEE PAGE 25



SEE PAGE THREE



TRW-REDI  
1-800-345-7334

SCALE IN 1/100 OF AN INCH

SEE P-25

JANUARY 1, 1986

RELATIVE REPRESENTATION

MIDDLEFIELD VILLAGE PG. 4

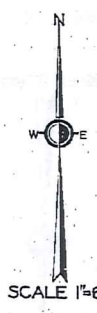
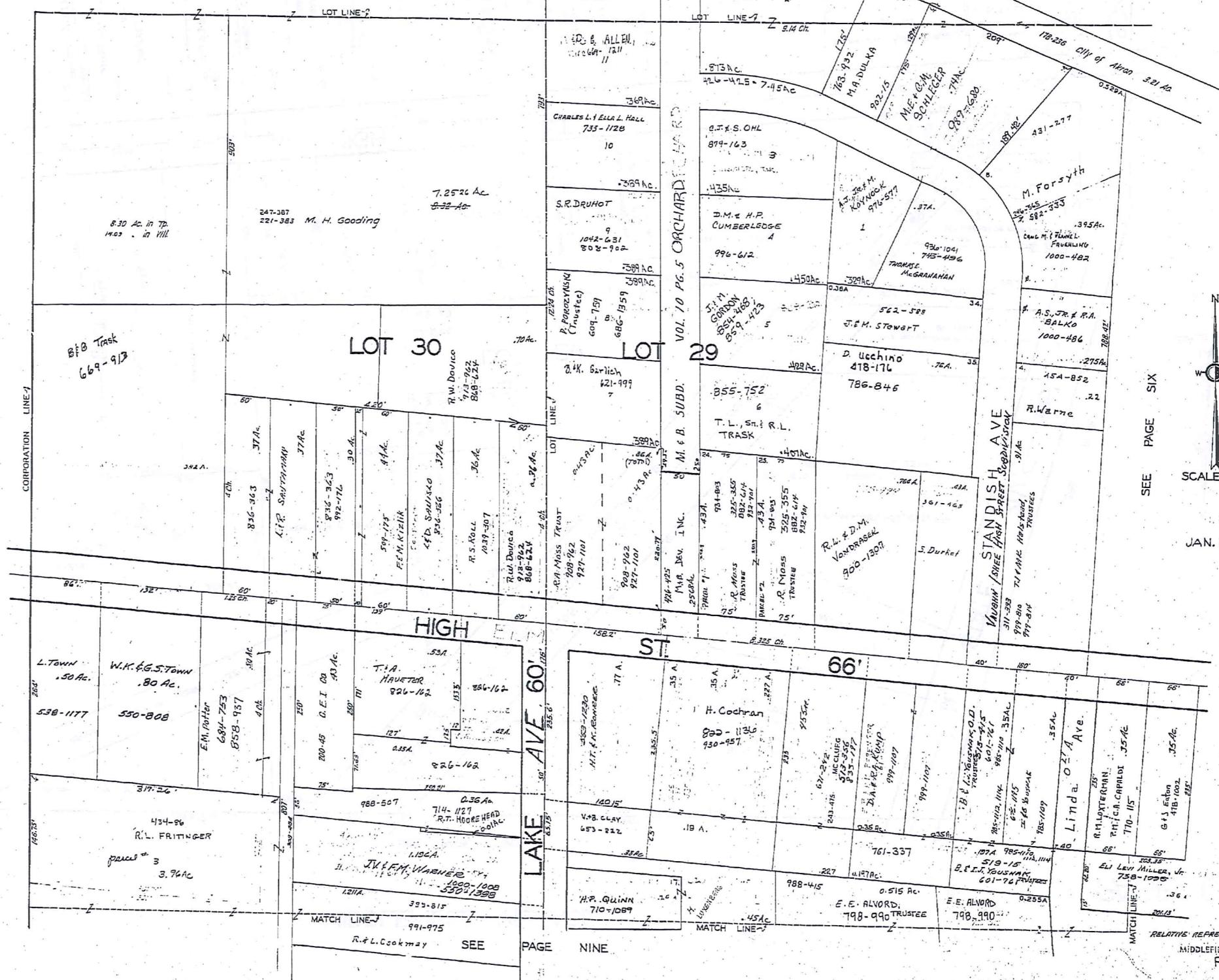
LOT 29

SEE PAGE EIGHT

310

MIDDLEFIELD VILLAGE

SEE PAGE ONE



JAN. 1, 1998

SEE PAGE SIX

RELATIVE REPRESENTATION MIDDLEFIELD VILLAGE PG. 5

TRIM-RED  
1-800-345-7334

SCALE IN 1/16 OF AN INCH

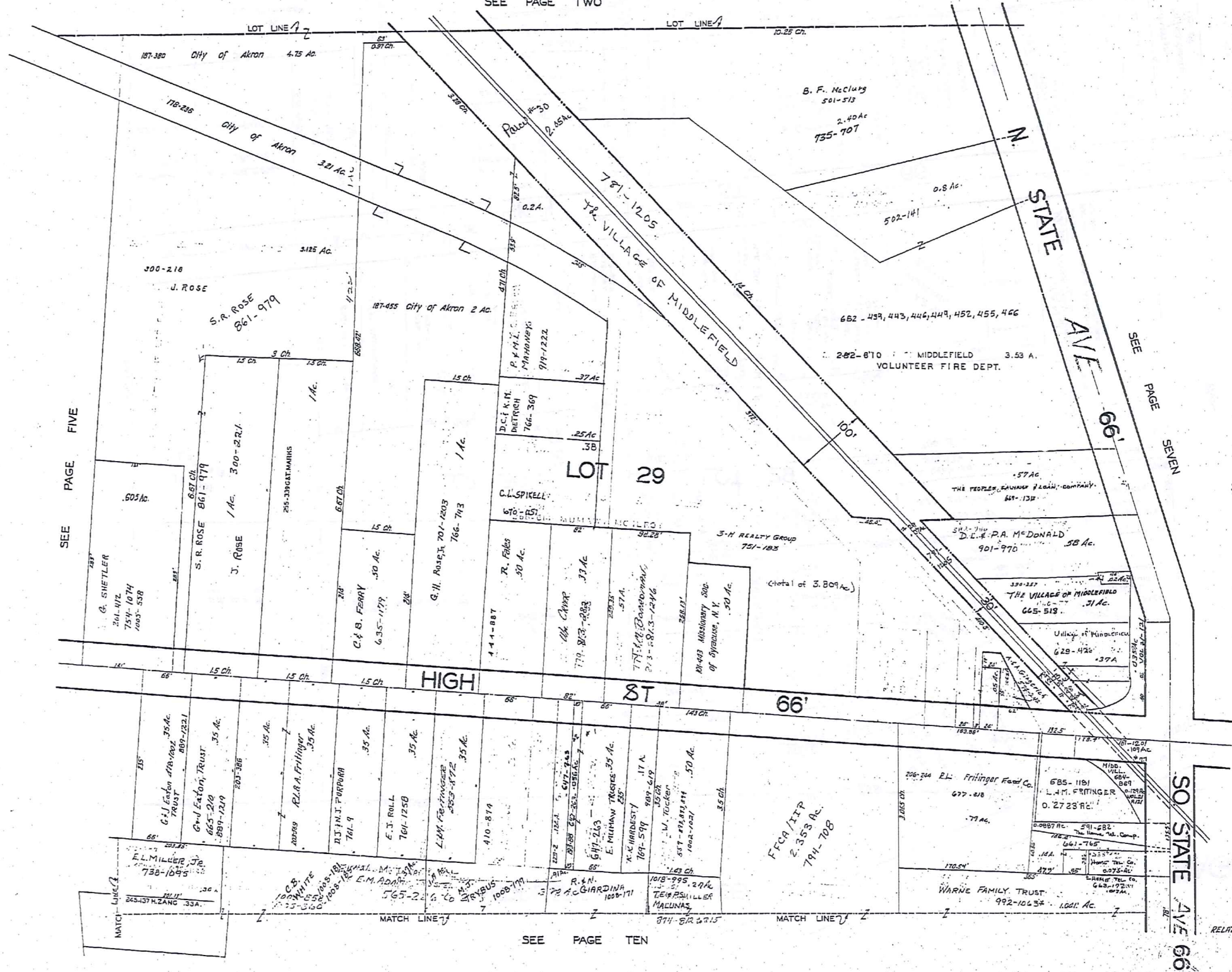
311

MIDDLEFIELD VILLAGE

SEE PAGE TWO

SEE PAGE FIVE

SEE PAGE TEN



SCALE 1"=66'

JAN. 1, 1996

TRW-REID  
1-800-345-7334



SCALE IN 1/10" OF AN INCH

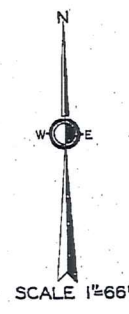
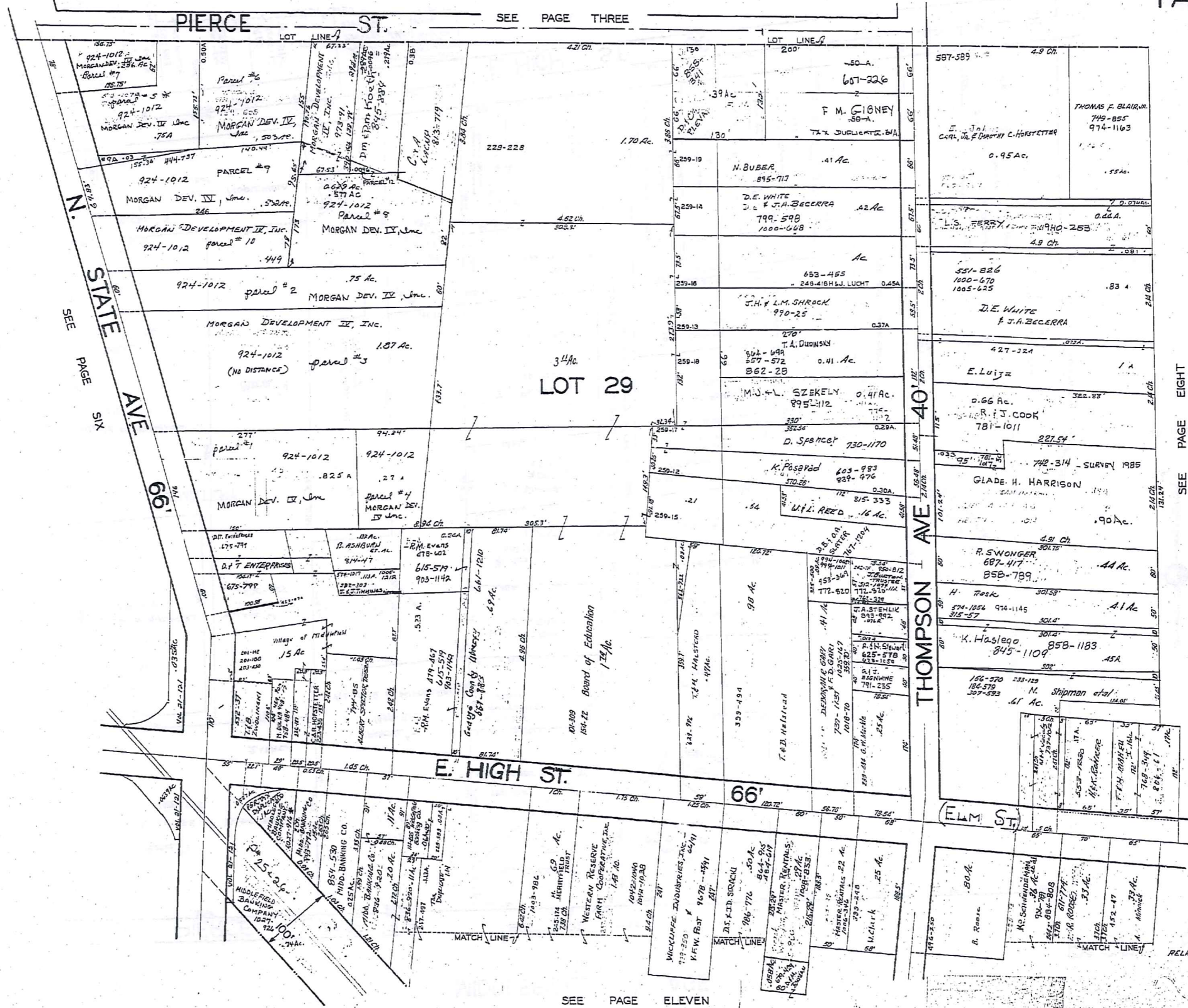
SO STATE AVE 66'

RELATIVE REPRESENTATION  
MIDDLEFIELD VILLAGE  
PG. 6

312

MIDDLEFIELD VILLAGE

PIERCE ST. SEE PAGE THREE



SEE PAGE EIGHT

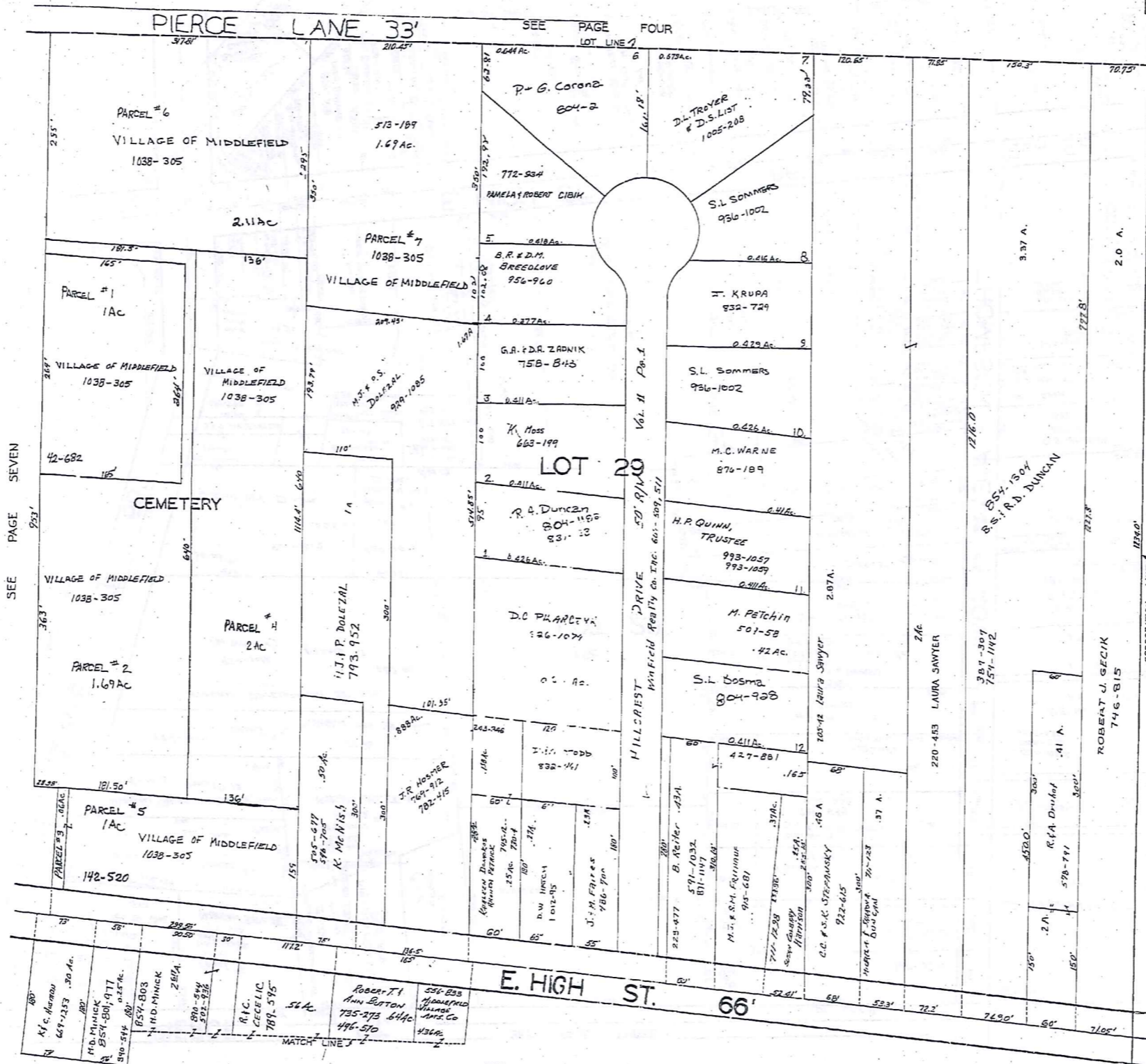
SEE PAGE ELEVEN

JANUARY 1, 1990  
RELATIVE REPRESENTATION  
MIDDLEFIELD VILLAGE  
PC 7

TRM-REDI  
1-800-245-7334  
SCALE 1/100 OF AN INCH

313

MIDDLEFIELD VILLAGE



SEE PAGE SEVEN

SEE PAGE FOUR

SEE PAGE TWELVE



SCALE 1"=66'

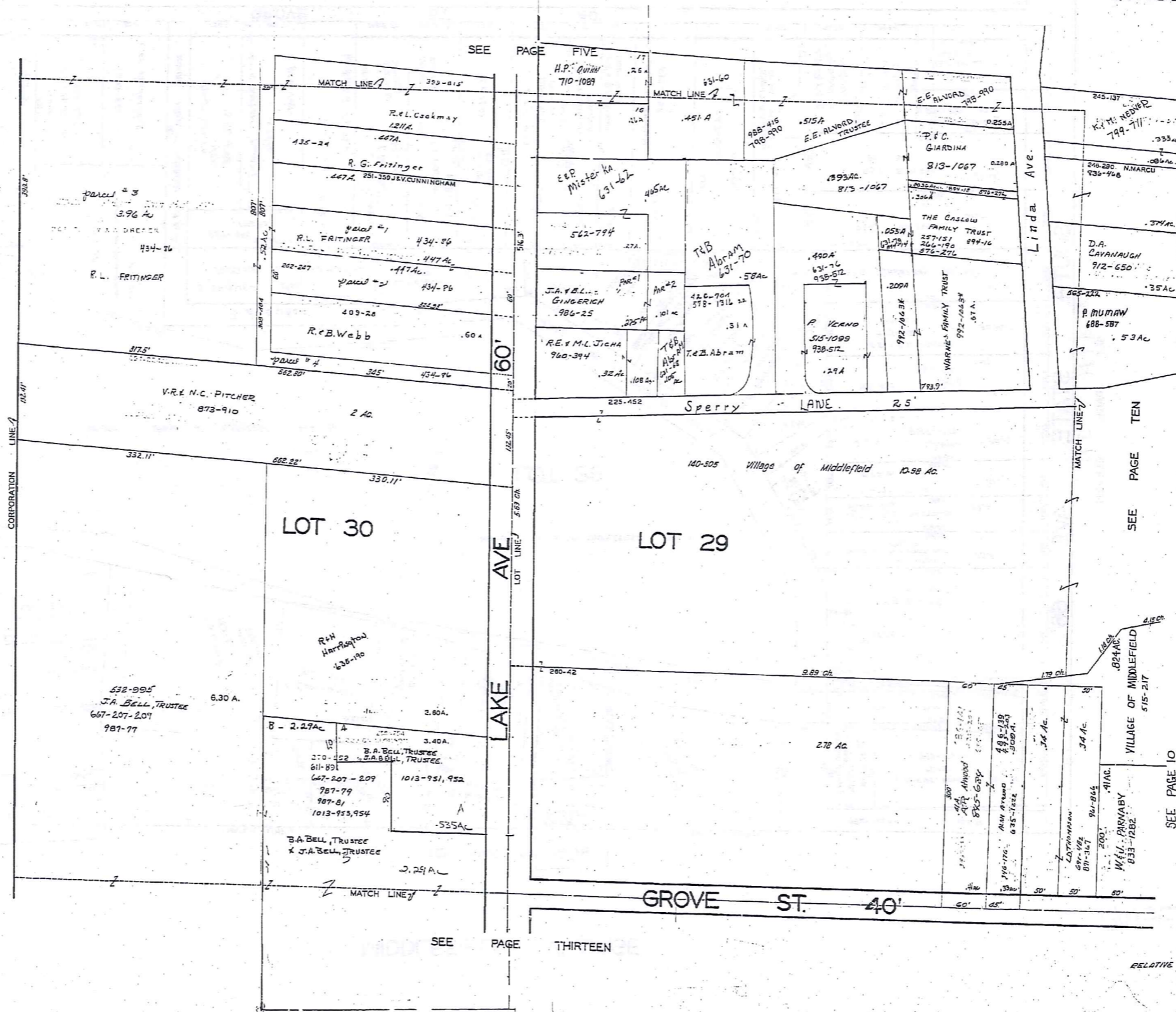
JAN. 1, 1996

TRW/RED  
1-800-345-1334



SCALE IN FEET OR AN INCH

314



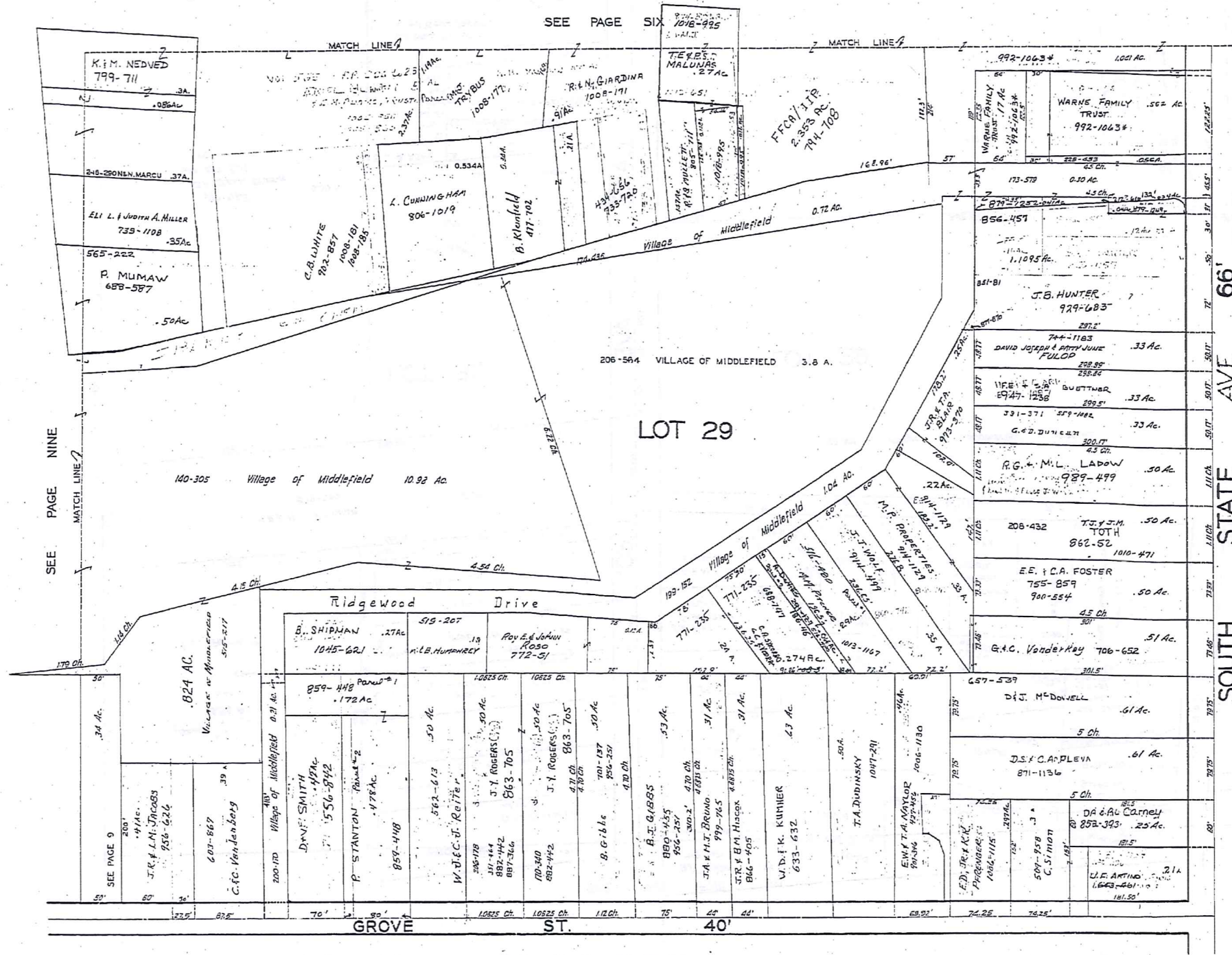
TRM-REDI  
1-800-345-7334



SCALE IN 1/16 OF AN INCH

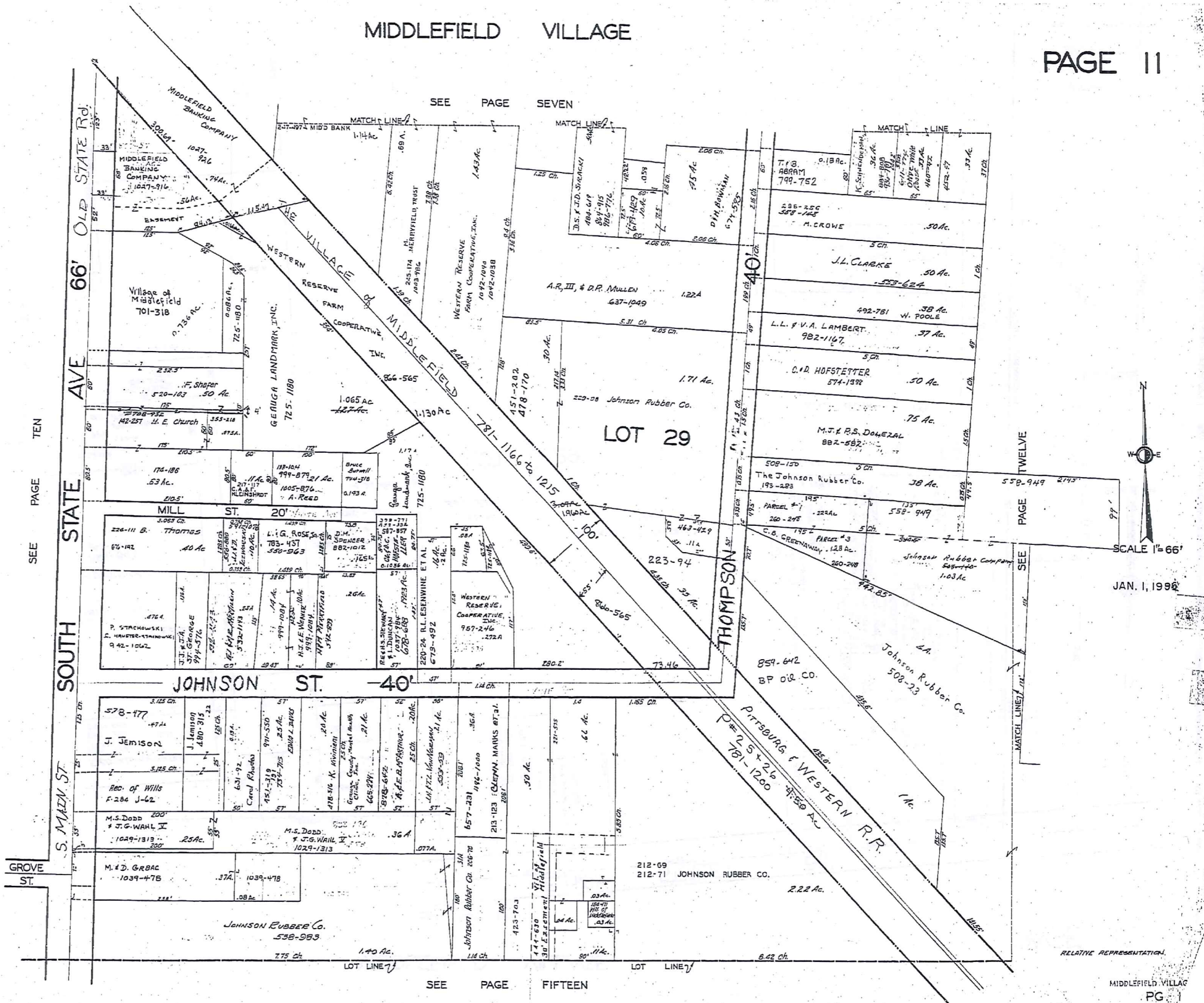
315

MIDDLEFIELD VILLAGE

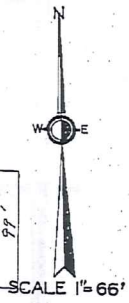
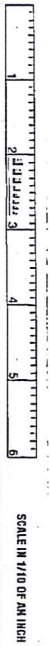


316

MIDDLEFIELD VILLAGE



TW-9801  
1-800-345-7334



JAN. 1, 1996

RELATIVE REPRESENTATION

MIDDLEFIELD VILLAGE  
PG 1

317

SEE PAGE TEN

SEE PAGE SEVEN

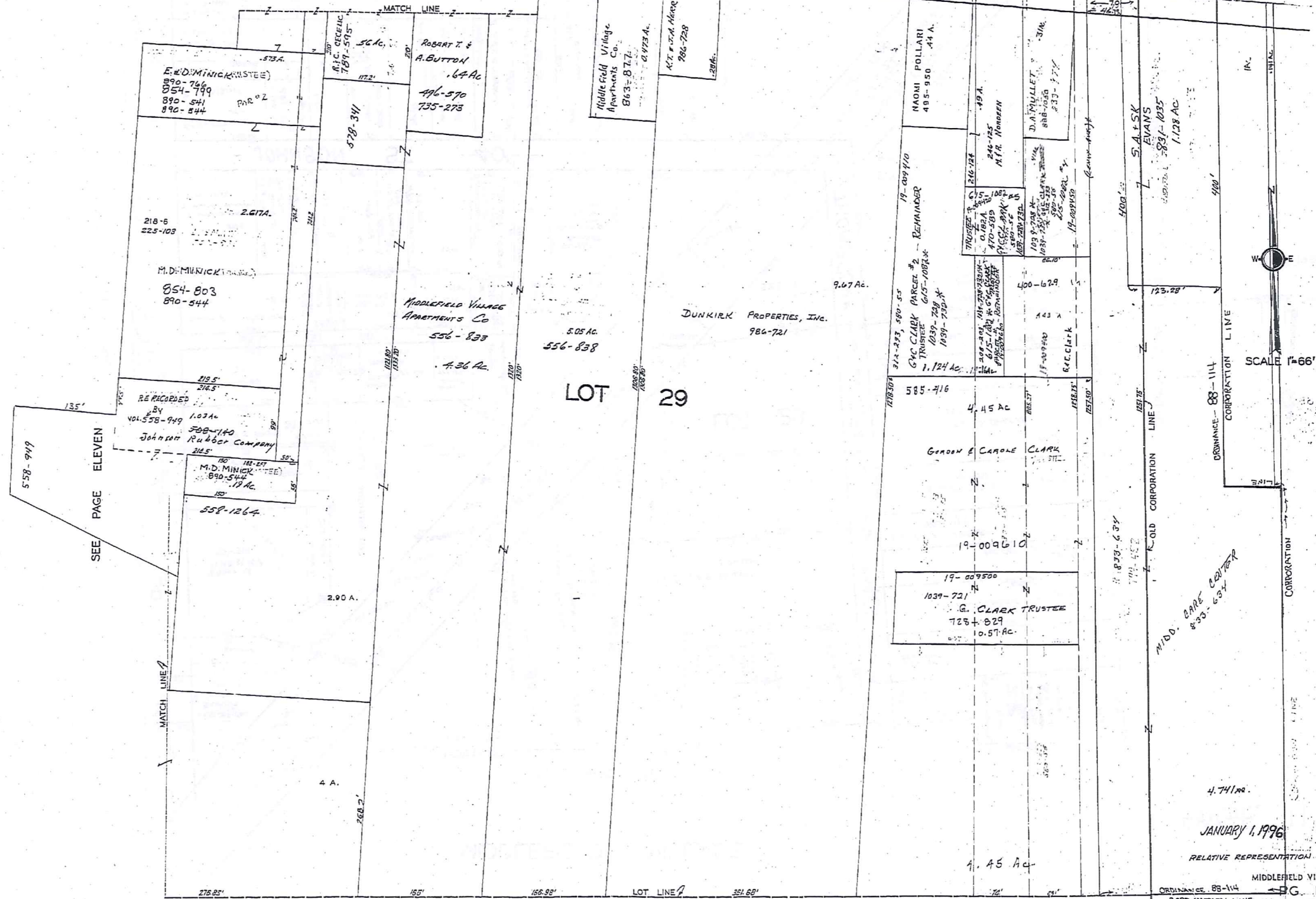
SEE PAGE FIFTEEN

SEE PAGE TWELVE

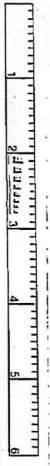
MIDDLEFIELD VILLAGE

SEE PAGE EIGHT

E. HIGH STREET 66'



TRM-REM  
1-800-345-7334



SCALE 1"=66'

JANUARY 1, 1996

RELATIVE REPRESENTATION

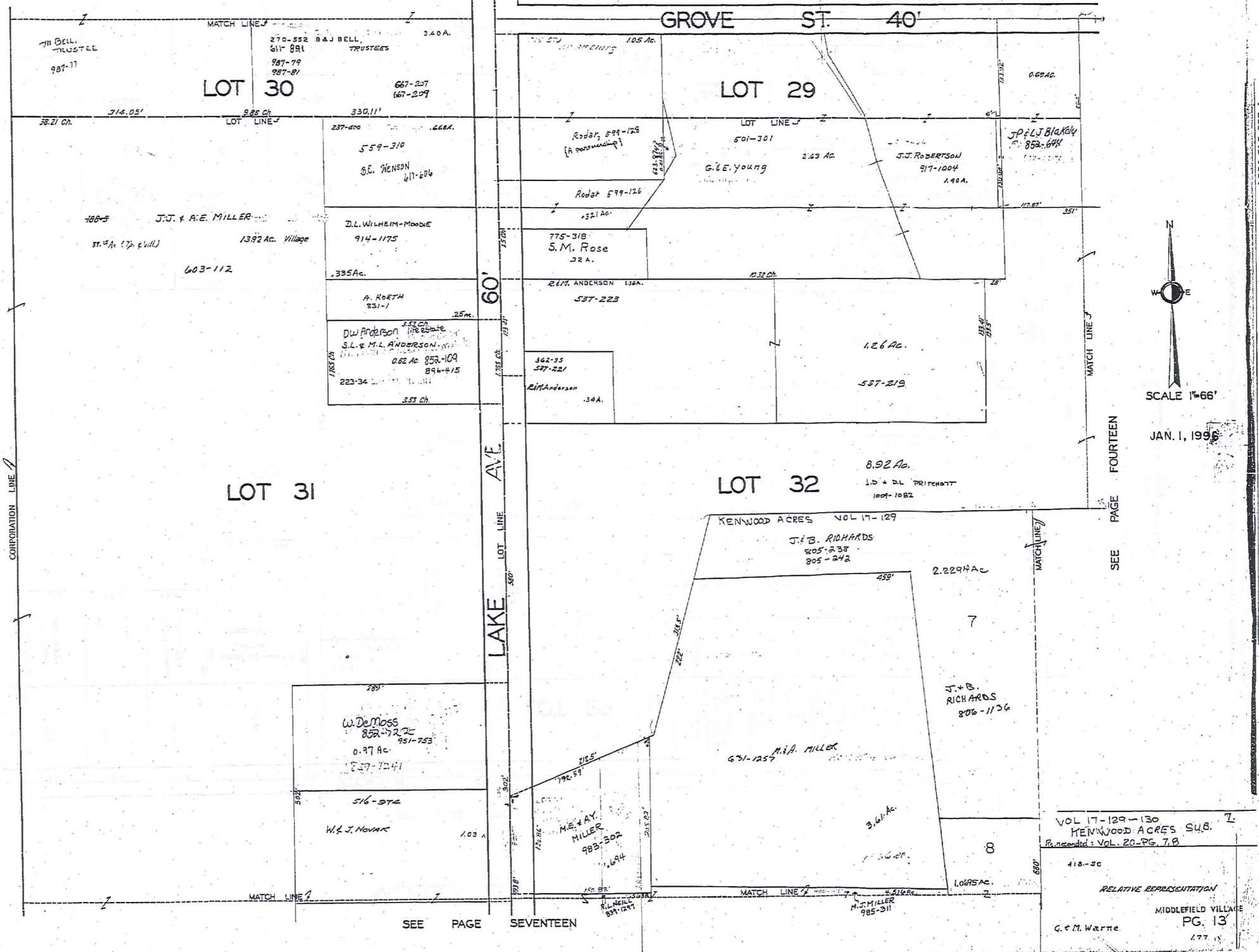
MIDDLEFIELD VILLAGE

ORDINANCE 88-114 CORPORATION LINE

SEE PAGE SIXTEEN

318

SEE PAGE NINE



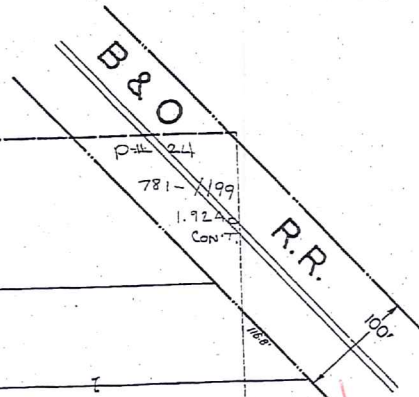
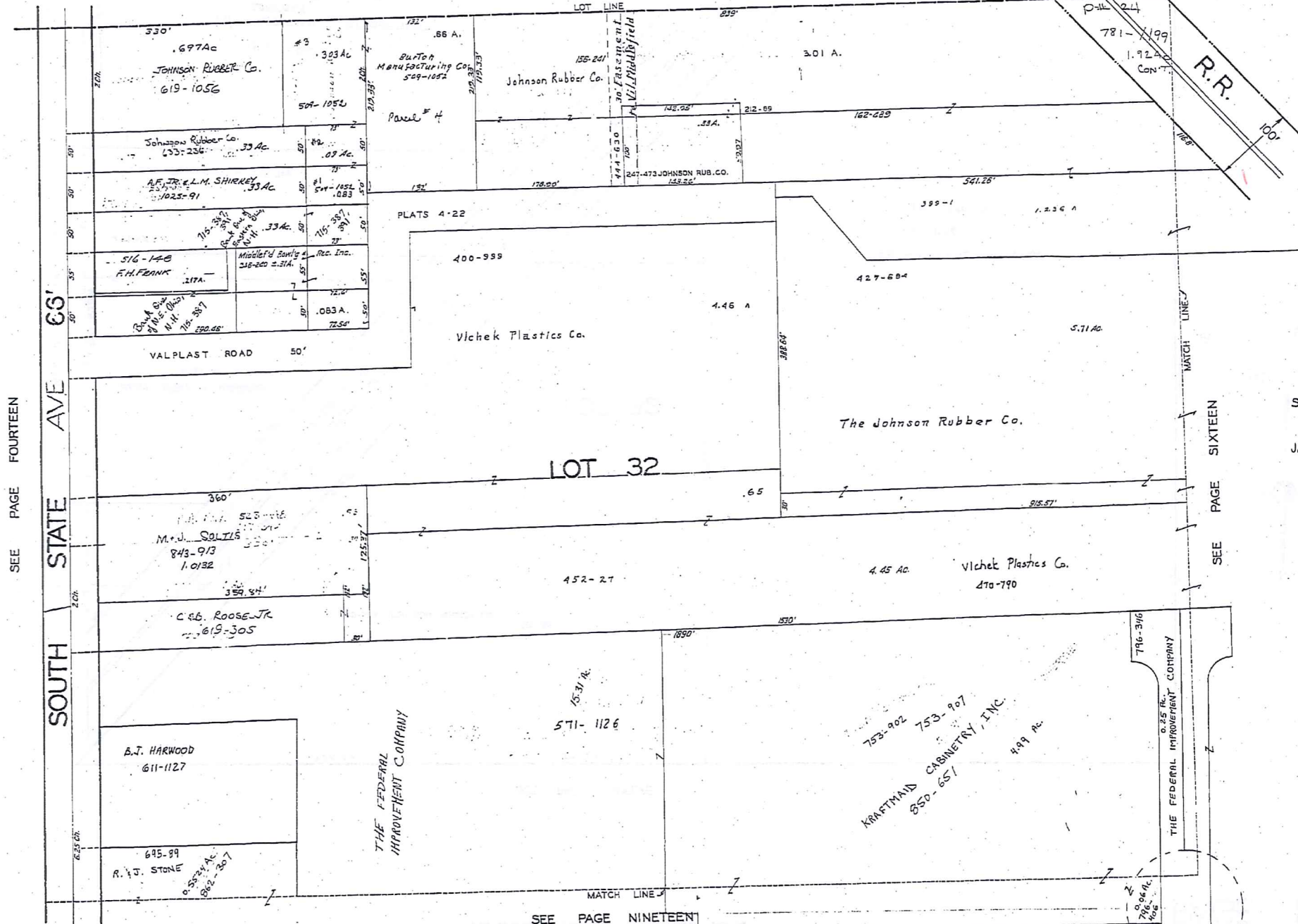
TRW-REDI  
1-800-345-7334

SCALE IN 1/16" OF AN INCH

319

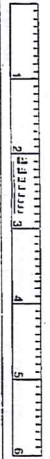


SEE PAGE ELEVEN



JAN. 1, 1996

TRW:REDI  
1-800-345-7334



SCALE IN 1/10 OF AN INCH

RELATIVE REPRESENTATION

MIDDLEFIELD VILLAGE  
PG. 15

SEE PAGE FOURTEEN

SOUTH STATE AVE 66'

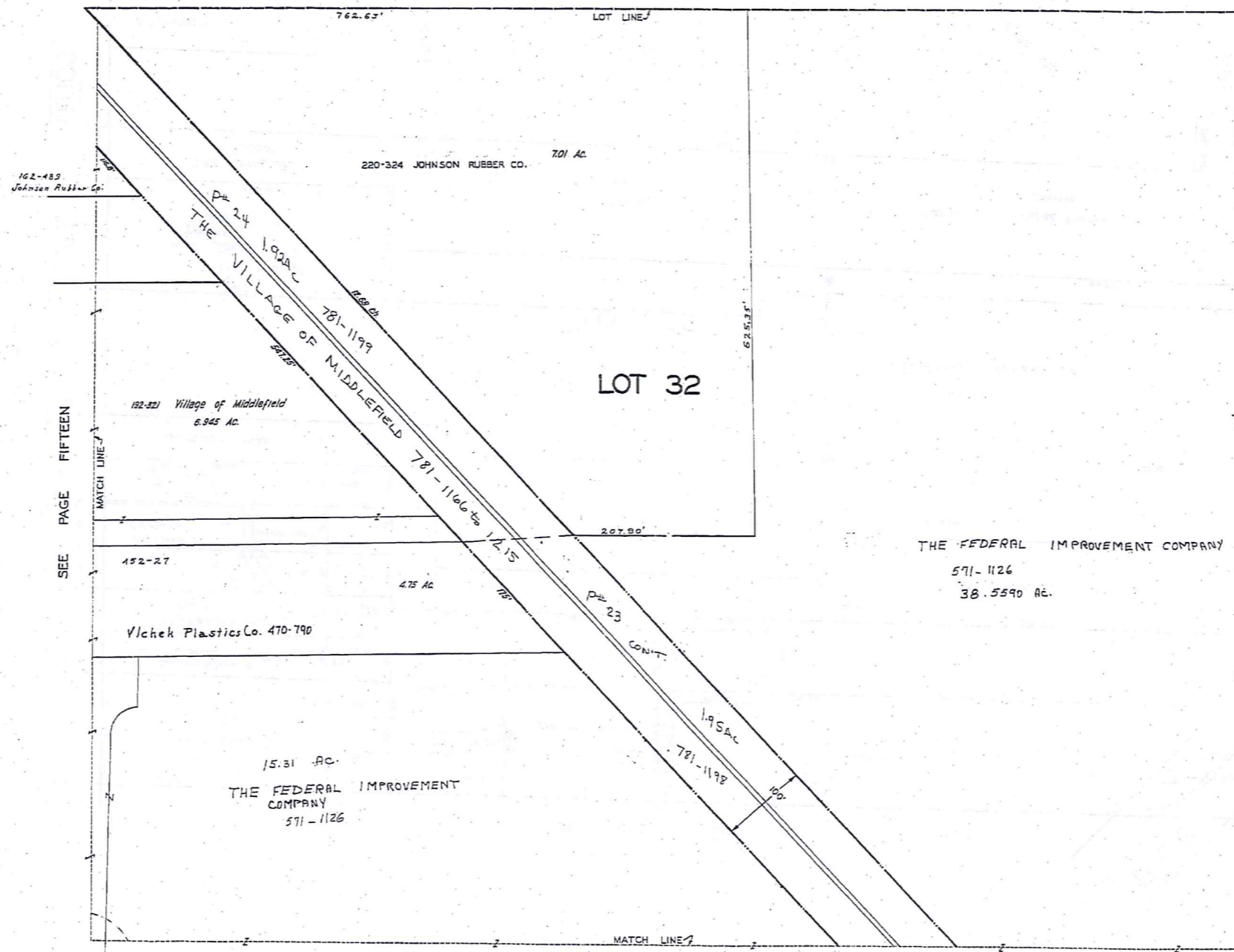
MATCH LINE  
PAGE SIXTEEN  
SEE

SEE PAGE NINETEEN

321

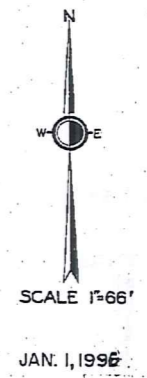
MIDDLEFIELD VILLAGE

SEE PAGE TWELVE



SEE PAGE TWENTY

SEE PAGE 21



TERRACED  
1-800-345-7334



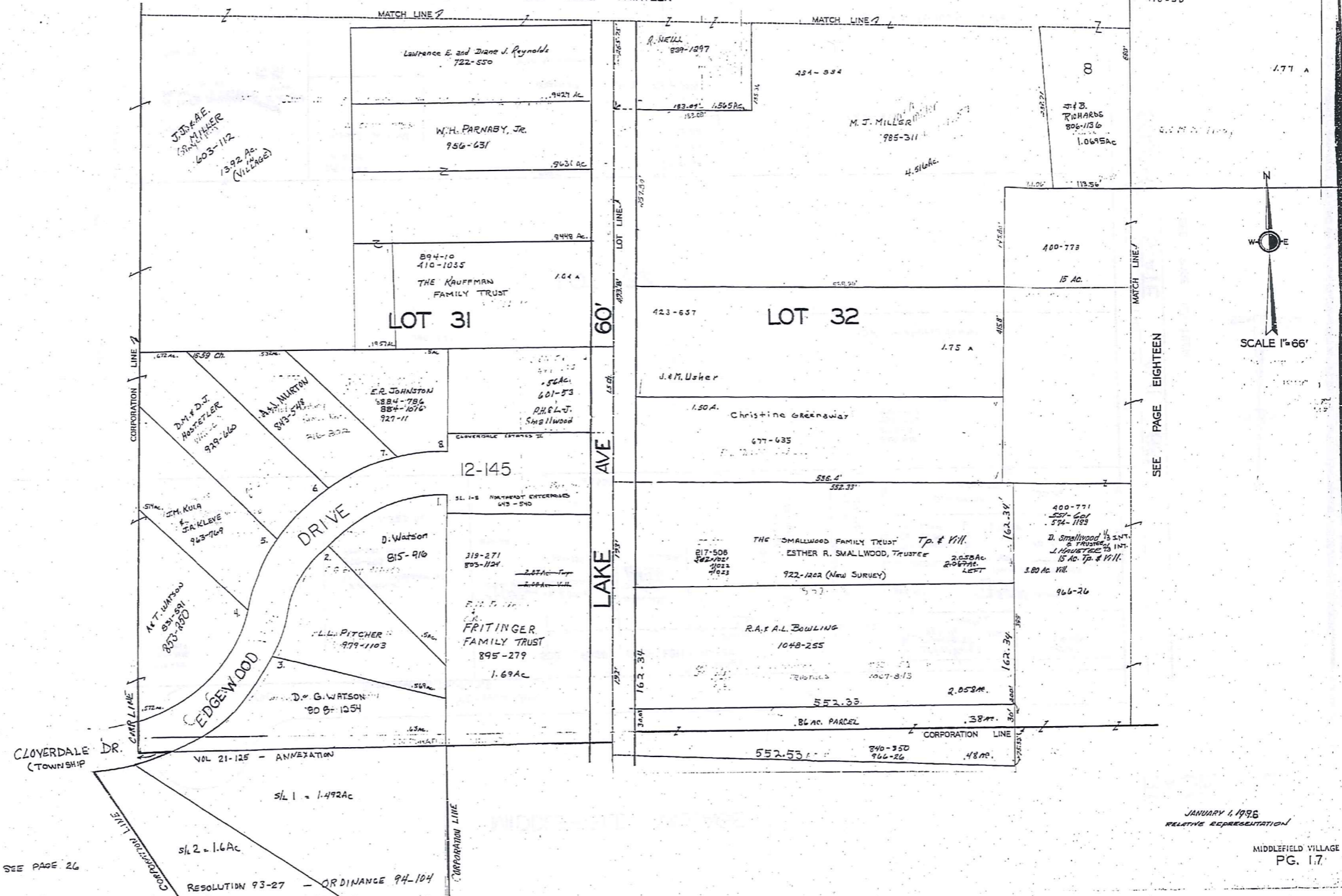
RELATIVE REPRESENTATION

322

MIDDLEFIELD VILLAGE

VOL 17-129  
KENWOOD ACRES SUB.  
Re-recorded VOL 20-PG 7,8

SEE PAGE THIRTEEN

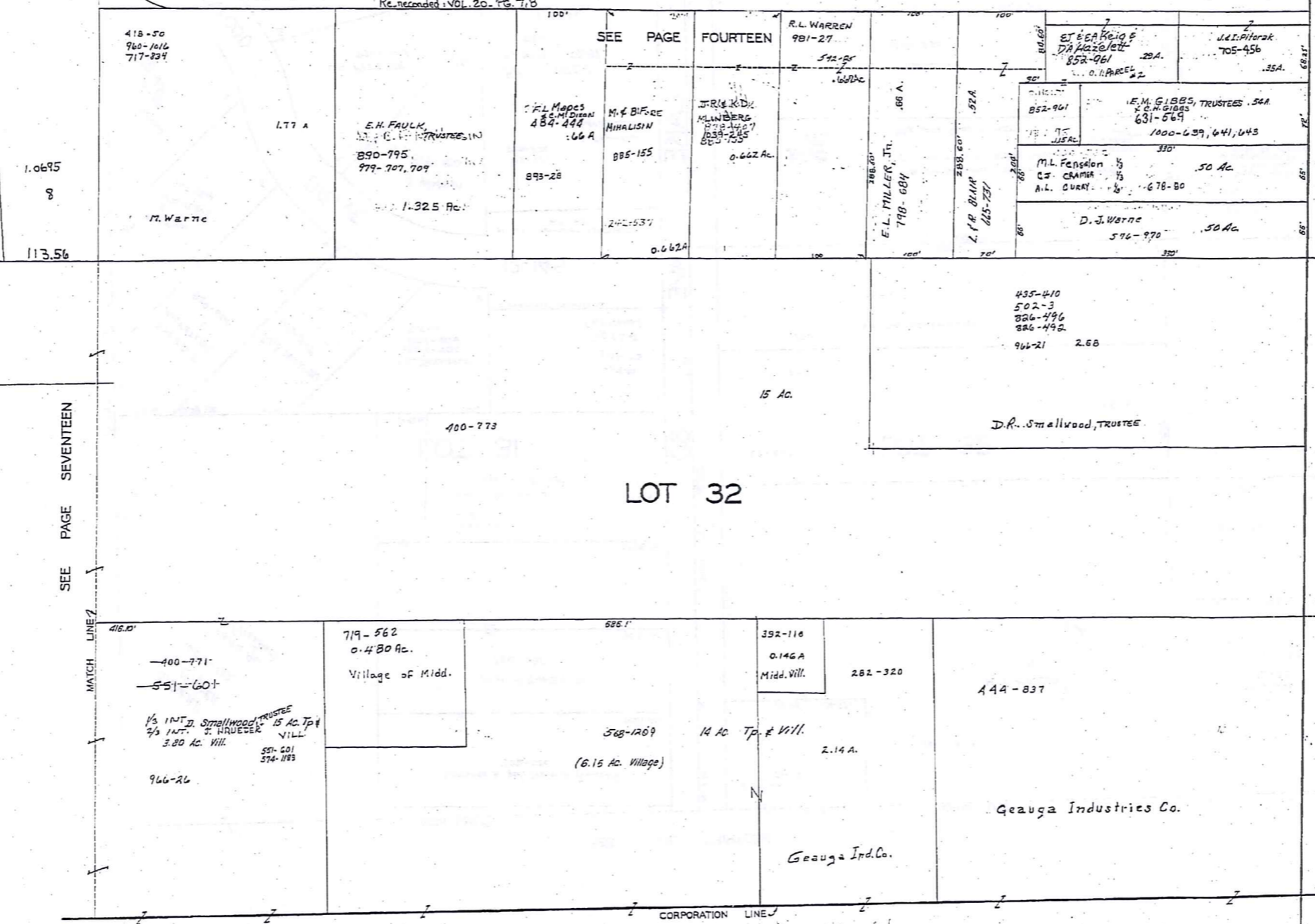


323

TRM-REDI  
1-800-345-7334  
SCALE 1/16" OF AN INCH

MIDDLEFIELD VILLAGE

VOL 17- P. 129  
Re-recorded: VOL 20- Pg. 7, 8



TAM:REDI  
1-800-345-7334  
SCALE IN 1/16 OF AN INCH

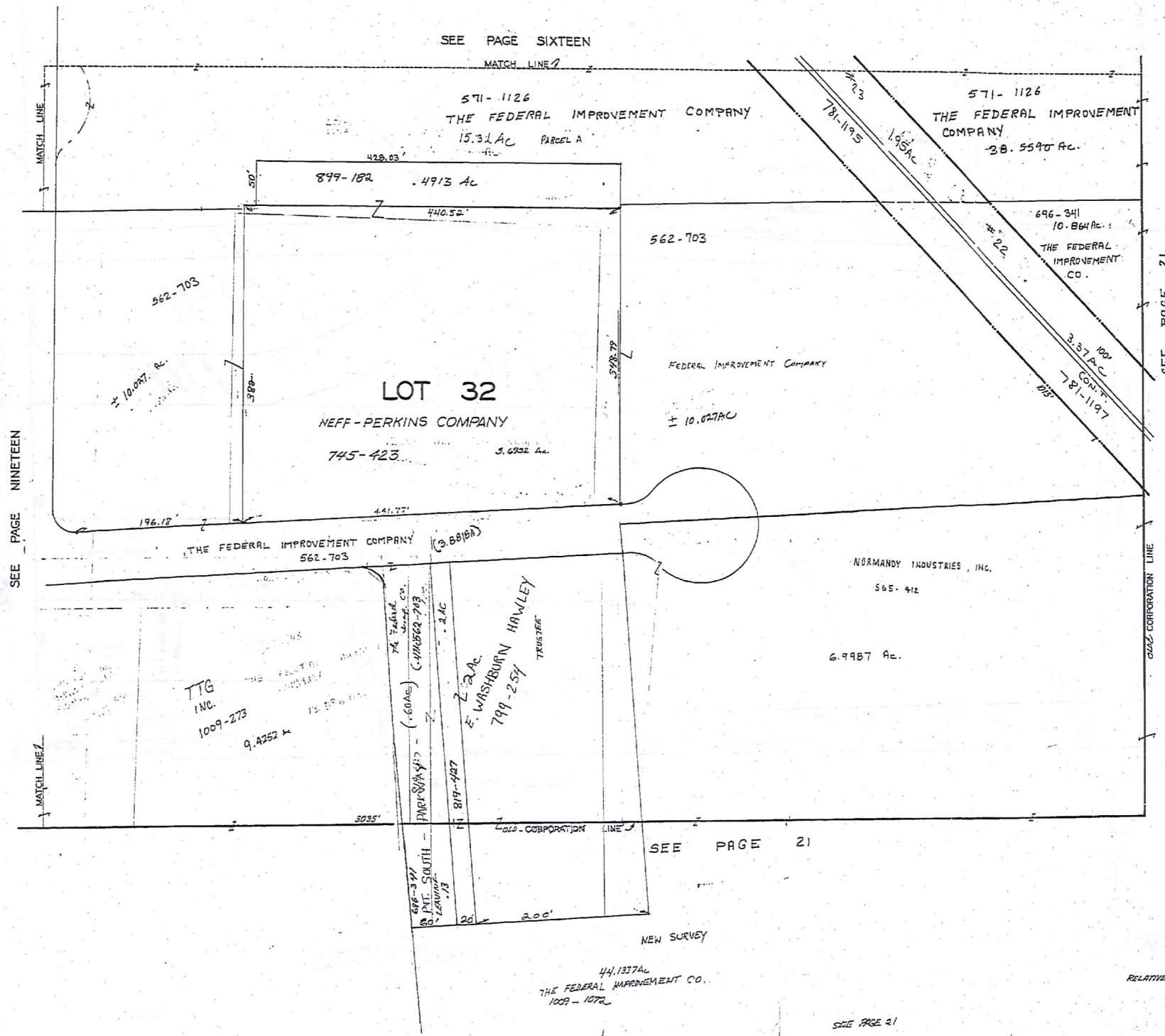
SEE PAGE NINETEEN

MAIN ST  
SOUTH STATE AVE 66'

SEE PAGE SEVENTEEN

324





JAN 6, 1964

TRM-RSD  
 1-800-345-7334  
 SCALE IN 1/16 OF AN INCH

SEE PAGE NINETEEN

SEE PAGE 21

SEE PAGE 21

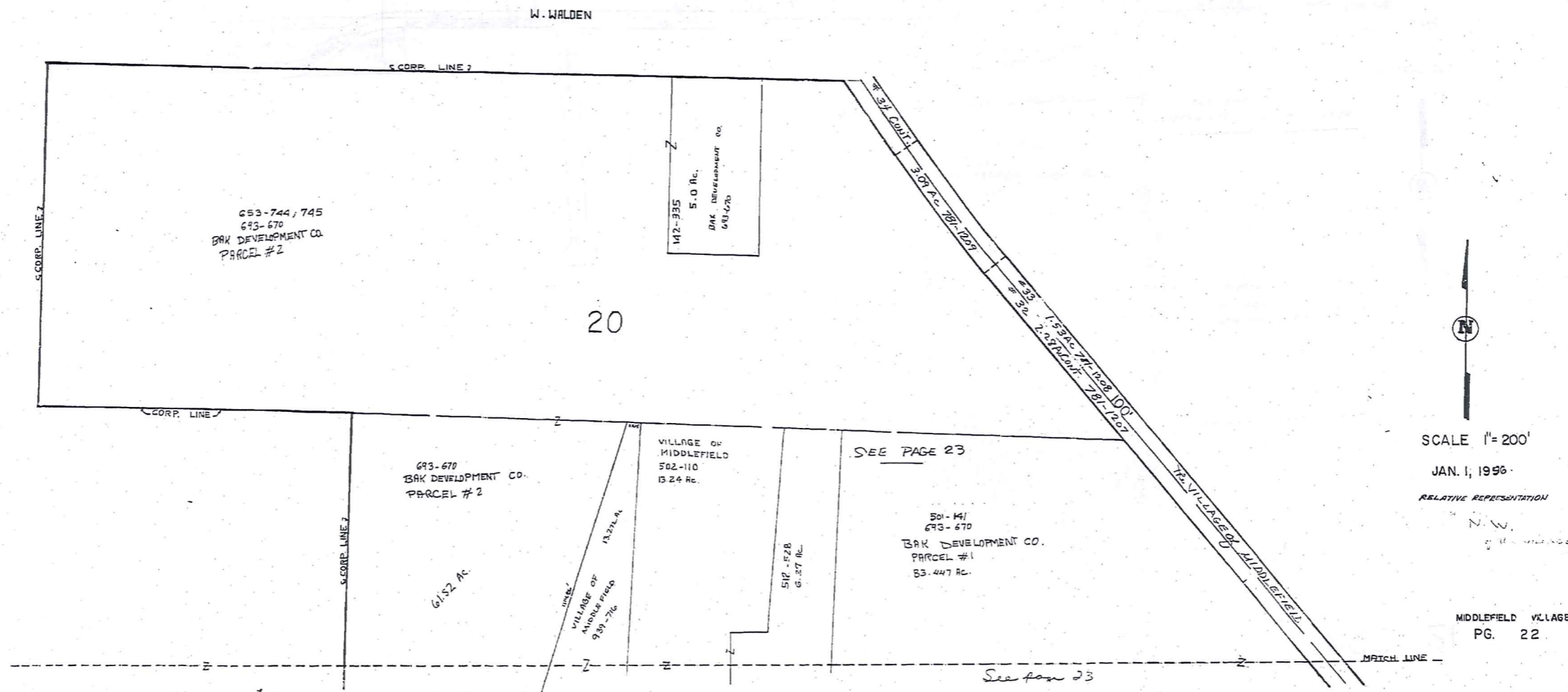
44,1337AL  
 THE FEDERAL IMPROVEMENT CO.  
 1009 - 1072

RELATIVE REPRESENTATION  
 MIDDLEFIELD VILLAGE  
 PG. 20

SEE PAGE 21

326



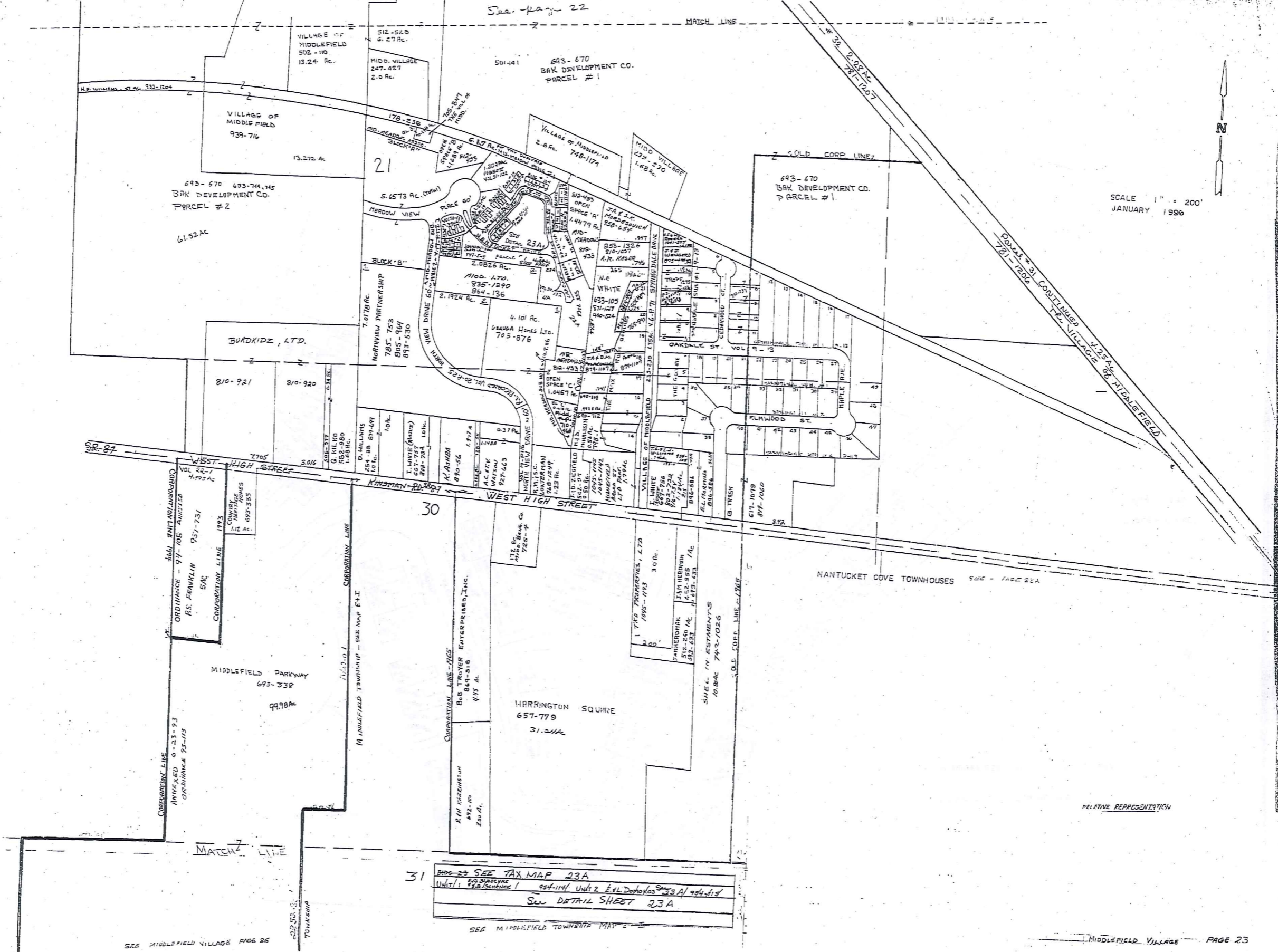


TRM-REDI  
1-800-345-7334

SCALE IN 1/10 OF AN INCH

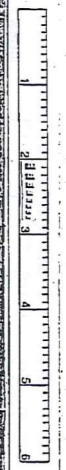
See page 22

MATCH LINE



SCALE 1" = 200'  
JANUARY 1996

TRW-REDI  
1-800-345-7334



SCALE IN 1/10 OF AN INCH

RELATIVE REPRESENTATION

31 SEE TAX MAP 23A  
 UNIT 1 954-1144 UNIT 2 954-1145  
 SEE DETAIL SHEET 23A

SEE MIDDLEFIELD TOWNSHIP MAP 2

SEE MIDDLEFIELD VILLAGE PAGE 26

MIDDLEFIELD VILLAGE PAGE 23

329



MIDD. VILLAGE	THE MAX H. RUTH B. GOODING SURVEY	VOL 6 - Page 71		VOL 6 - Page 71		VOL 6 - Page 71		VOL 6 - Page 71		VOL 6 - Page 71		VOL 6 - Page 71		VOL 6 - Page 71		
DATE	OWNER	S/L	AC	VOL	PAGE	TRANSFERRED TO	S/L	DATE	VOL	PAGE	TRANSFERRED TO	S/L	DATE	VOL	PAGE	
	N. NELSON	1	0.26	512	720											
	R. D. BAUMGARTNER	2	0.278	501	587											
	F. FALES	3	0.275	387	456											
	S. L. THOMAS	4	0.275	480	812											
	T. R. MASS	5	0.275	552	1278											
	L. McELROY AKA L. EDWARDS	6	0.275	710	586	P.E. GILCHRIST	6	1/28/92	982	861						
	R. E. CHRISTOFFERSON	7	0.31	813	912	E. CHRISTOFFERSON	7	1/28/92	982	1222	F. CHRISTOFFERSON	7	1/28/92	982	922	
	"	8	0.31	813	912	"	8	"	"	"	"	"	"	"	"	
	J. M. BORKHOLDER	9	0.31	495	418	"	"	"	"	"	"	"	"	"	"	
	R. W. HERRON	10	0.275	785	9	"	"	"	"	"	"	"	"	"	"	
	G. J. TRADF	11	0.275	734	289	"	"	"	"	"	"	"	"	"	"	
	"	12														
	M. D. MIHALISIN	14	0.28	798	1											
	L. K. JONES	15	0.26	690	201											
	"	16	0.42		"											
	D. S. CLARKE	17	0.39	576	1351	S. CLARKE	17	1/27/92	983	136						
	T. A. D. M. POLAKOWSKI	18	0.35	277	1107											
	W. T. HOSTETLER	19	0.38	882	1017											
	J. W. G. STEELE	20	0.24	765	951											
	R. L. S. CROCKMAY	21	0.275	804	919											
	R. L. KASER	22	0.37	574	33											
	VOL 9-13															
	SPRINGDALE SUB. #1-22															
	D. M. BARTON	1	0.247	705	121											
	K. QUILLEN	2	0.251	550	892	J. STEWART	2	6/9	372	M.E. - V. BOYLES	2	3/16/92	1010	590		
	P. L. WISEMAN	3	0.251	795	31											
	R. L. T. DETWEILER	4	0.251	928	1318	C. L. E. GAUSE	4	3/27/92	982	537						
	G. W. B. J. WILKES	5	0.235	887	639											
	N. LANGHAM	6	0.233	715	533											
	A. M. SATTERLEE	7	0.247	816	442	also Northwesterly S. of Bl. S. 815-442										
	G. FULOP	8	0.242	780	709	also Northwesterly S. of Bl. S. 817-709										
	A. D. BARCOWSKI	9	0.250	537	922	also Northwesterly S. of Bl. S. 527-922										
	"	10														
	E. STEWART	11	0.247	936	270	also Southwesterly S. of Bl. S. 936-270										
	E. E. SELBY	12	0.270	404	600											
	M. E. E. BRILANT	13	0.274	912	14											
	W. B. OSMOND	14	0.462	576	1033											
	"	15	0.412	576	1032											
	A. B. R. M. HILL	16	0.354	502	916											
	R. DEMARCO	17	0.333	813	1506											
	D. C. HERSH	18	0.251	810	743											
	R. W. M. T. DETWEILER	19	0.250	845	1194	R. W. T. DETWEILER	19	3/27/92	1043	1062	G. C. ZIEGLER	19	3/27/92	1044	1084	
	"	20	0.250	845	1194	"	20	"	"	"	"	20	"	"	"	
	E. C. ZIEGLER	21	0.250	702	551											
	J. D. SMITH	22	0.250	617	729											
	L. G. L. E. FIERMANN	23	0.250	593	909											
	B. R. HATCH	24	0.250	713	299	E. M. SQUIGGS	24	0.250	1023	631						
	E. M. COX	25	0.250	855	519											
	M. A. S. CONTINENZA	26	0.237	921	666	M. A. CONTINENZA	26	0.237	996	1022						
	J. L. P. V. MILLER	27	0.249	537	677											
	"	28														
	R. G. WATSON	29	0.230	959	837											
	N. A. L. SHUMINSKI	30	0.233	723	614											
	R. W. WERICK	31	0.233	813	1031											
	T. W. McEANEY	32	0.233	551	201	V. McEANEY				974	499					
	W. K. BLUE	33	0.233	591	1090											
	R. D. KLEPPER	34	0.232	593	722											
	K. E. FERRY	35	0.235	551	256											
	B. MAZZONE	36	0.242	551	181											
	D. M. MARES	37	0.233	775	1109											
	A. S. PETRICK	38	0.233	661	337											
	"	39														
	W. E. D. M. CANTERBURY	40	0.233	552	913	R. R. J. M. FREZOSER	40	0.233	1024	15						
	J. BRUCE	41	0.231	663	711											
	T. P. AKERS	42	0.230	839	457											
	C. J. BRIGHAM	43	0.230	551	574											
	ALLEGHENY WESLEYAN METHOD	44	0.237	647	541											
	M. D. ROACH	45	0.232	356	447											
	J. W. K. M. BLASUIS	46	0.250	551	540											
	R. A. S. BRAUN	47	0.237	556	1077											
	J. R. HOSTETLER	48	0.235	937	625											
	W. J. SLY	49	0.232	766	771											

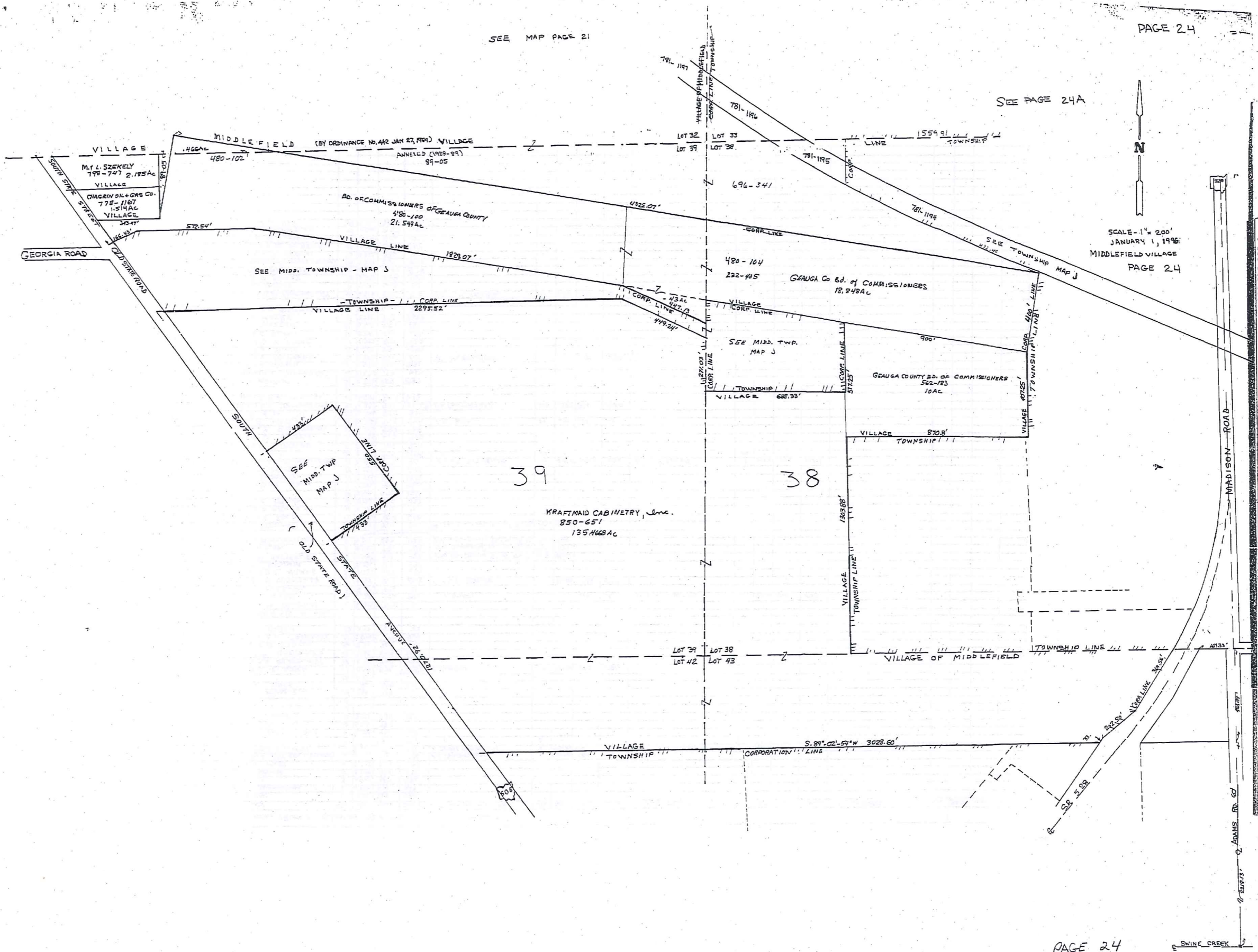
331

TRW-RED  
 1-800-345-7334  
 SCALE IN YTD OF AN INCH

SEE MAP PAGE 21

PAGE 24

SEE PAGE 24A



SCALE - 1" = 200'  
 JANUARY 1, 1996  
 MIDDLEFIELD VILLAGE  
 PAGE 24

TWM:REDI  
 1-800-345-7334  
 SCALE IN 1/10 OF AN INCH

PAGE 24

SWINE CREEK

332



MIDDLEFIELD VILLAGE

PAGE 25



S/L	GLEN VALLEY FARMS #1	DATE	VOLUME
1	W.H. & B.M. HILL	9-10-93	953-532
2	D.J. HARPELL	4-5-95	1011-841
3	COUNTRY VALLEY ESTATES, L.L.C.	7-19-94	955-395
4	W.H. & E.A. DUNLAP	3-24-95	1011-240
5	J. LINNAN	12-7-94	1002-1199
6	J.J. & L.L. LAZZARA	7-18-94	985-329
7	M.L. PATTERSON, SR. & Y.M. PATTERSON	1-2-94	968-149
8	R.H. LEE HOODNY	8-18-95	1015-111
9	COUNTRY VALLEY ESTATES, LTD.	4-30-94	995-1009
10	COUNTRY VALLEY ESTATES, LTD.	2-1-95	1007-128
11	M.B. & M.H. NANISH	12-30-93	967-1172
12	B.J. & G.T. WALLACE	12-30-93	967-1073
13	D.S. & P.J. MIHALIK	12-29-93	967-317
14	S. JEREB	5-28-95	941-459
15	RT. JIM ROSE	8-1-94	989-858
16	M.J. MUHL & B.M. LYNE	9-27-93	954-1115
17	R.A. & R.M. GEITHER	1-12-94	968-1315
18	W. & S. S. HERRIN	8-23-93	941-1332
19	E. & P.L. MARCHINI	9-27-93	954-1525
20	T.F. MILLER & A.K. BUEHNER	2-10-94	844-353
21	R.R. & C.A. WOLFERT	8-31-94	992-929
22	COUNTRY VALLEY ESTATES, LTD.	2-1-95	1007-124
23	COUNTRY VALLEY ESTATES, LTD.	2-1-95	1007-126
24	V.J. GIBALDI	12-8-94	1002-912
25	E. & A. KUBIK	3-27-95	1028-1090
26	A.T. & J. WEATHERHOLT	12-18-93	964-1135
27	S.J. & M.E. SARGENT	8-22-94	991-1021
GLEN VALLEY FARMS #2 VOL 21 - R 1162 117			
28			
29			
30			
31	DAMON HOMES, INC.	11-27-95	1034-629
32	DAMON HOMES, INC.	6-26-95	1019-298
33			
34			
35	S.H. & C.S. STEPAK	5-25-95	1016-424
36	D.C. & H.L. MULLETT	8-25-95	1025-782
37	K. & E. KRACKHO	12-14-95	1035-1259
38	S.E. & L. EVERS, DBA. FOPLAR RIDGE BLDG.	4-16-96	1047-1215
39	S.E. & L.A. KLEIN	10-31-95	1032-783
40			
41	W.J. & V.I. CORNELL	3-1-96	1042-1065
42			
43	F.W. KLARK	7-11-95	1020-1136
44	DAMON HOMES, INC.	12-26-95	1037-21
45	DAMON HOMES, INC.	1026	966
46	MARSHALL DEVELOPMENT CO. INC.	5-19-95	1015-1230
47	T.G. BANN	10-9-95	1017-616
48	DAMON HOMES, INC.	10-21-94	1037-32

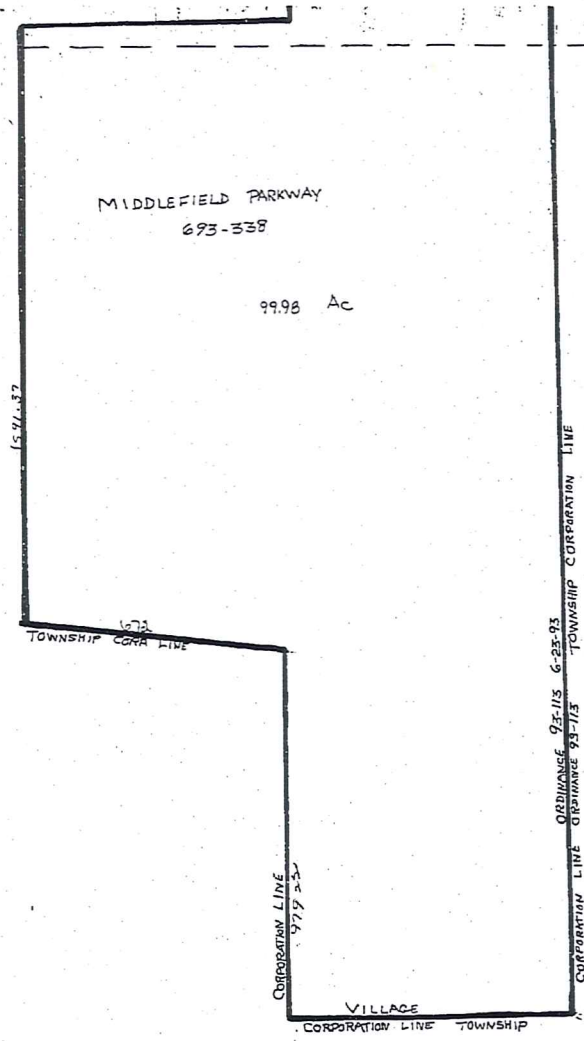
PAGE 25

129.0826 AC  
ORDINANCE 91-150  
MIDD. ANNEXED 12-24-91

SCALE 1" = 200'  
JAN. 1, 1996

TRM-REMI  
 1-800-345-7334  
 SCALE IN 1/10 OF AN INCH

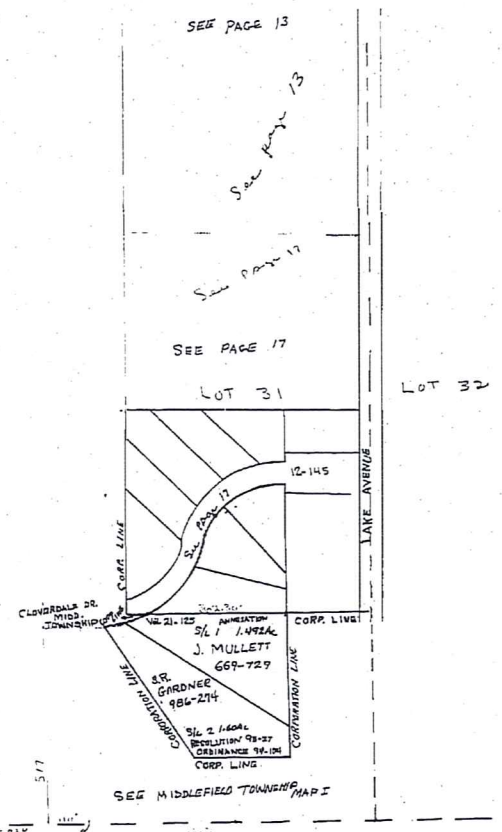
334



31

SEE MIDDLEFIELD TOWNSHIP MAP I

SEE PAGE 23



MATCH LINE TO P. 43

TOWN-NEED  
1-800-345-7334

1
2
3
4
5
6
7
8
9

SCALE IN FT. OF AN INCH

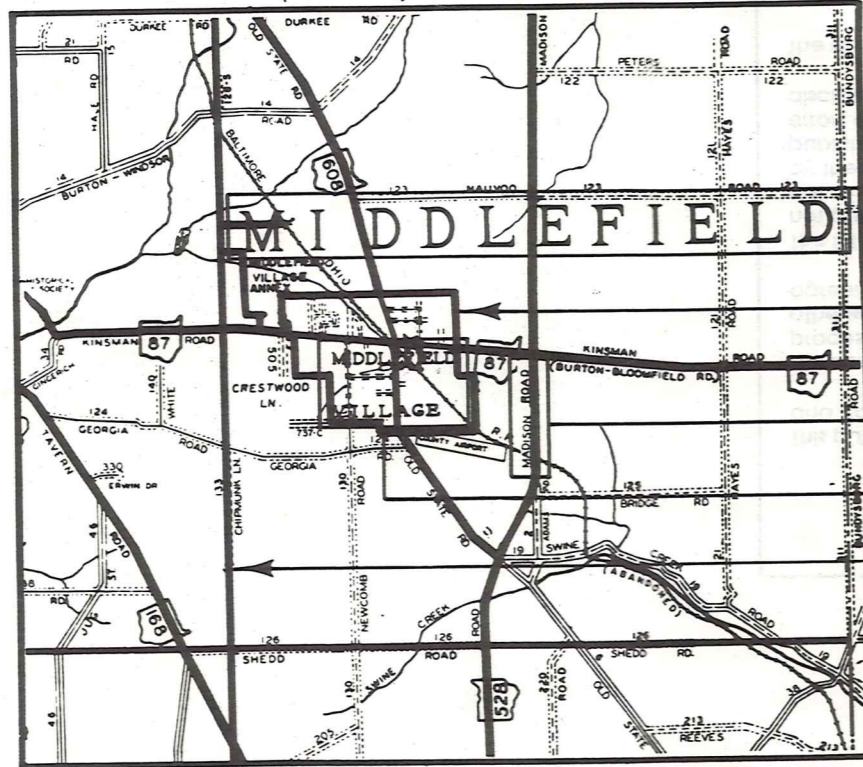
MIDDLEFIELD VILLAGE  
MAP PAGE 26  
SCALE - 1" = 200'  
JAN. 1, 1998



# Explanation and Use Sheet for Geauga County, Ohio

A

SAMPLE (PARTIAL) COUNTY INDEX MAP



Tract Lot Number

Acreage

Township Name

Village Boundary

Street Name

Village Name

Township Boundary

Owners Name

Denotes Continuous Ownership

Deed Book & Page

Map Page Number

Township Name

Village Name

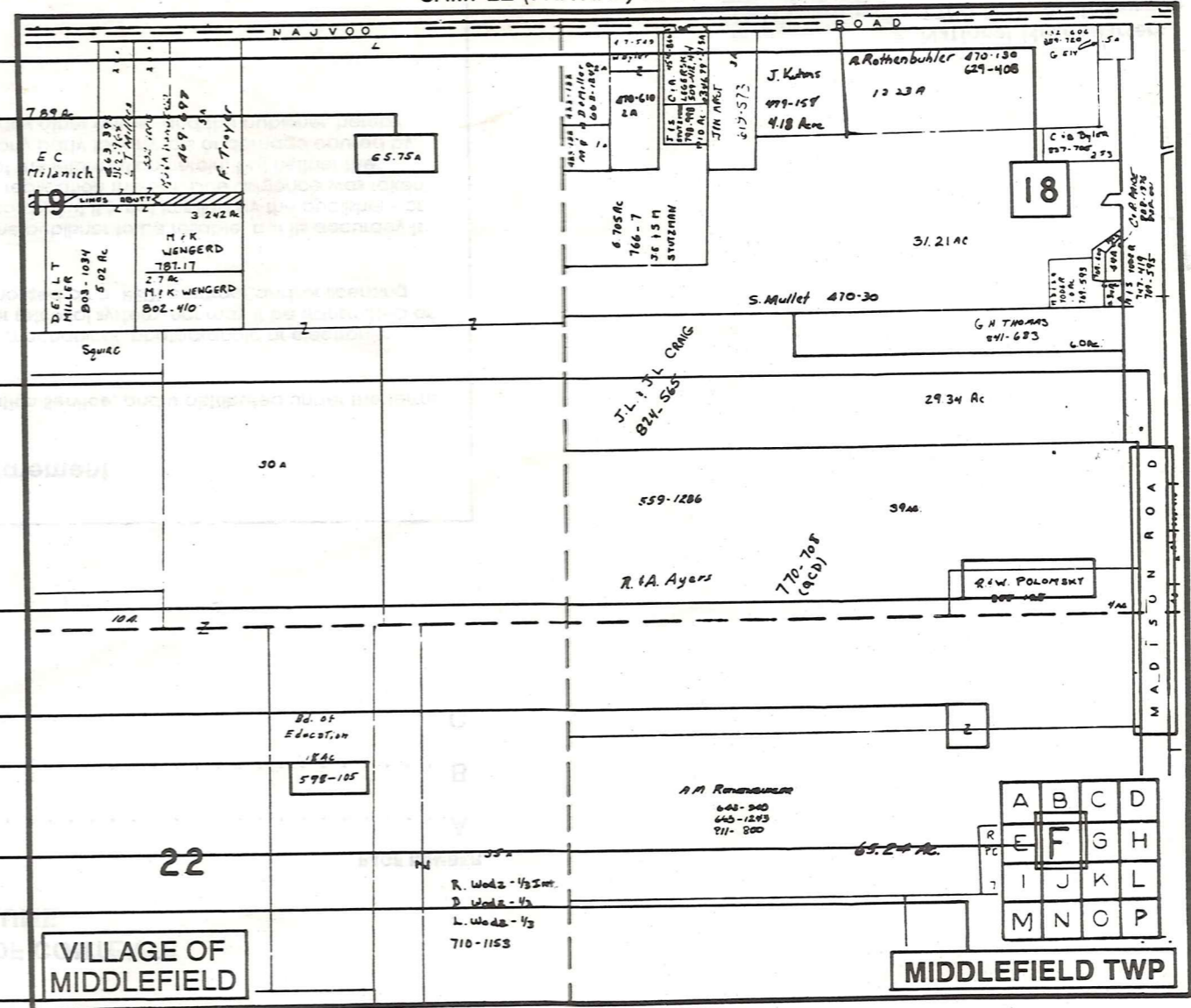
Village Boundary

Street Name

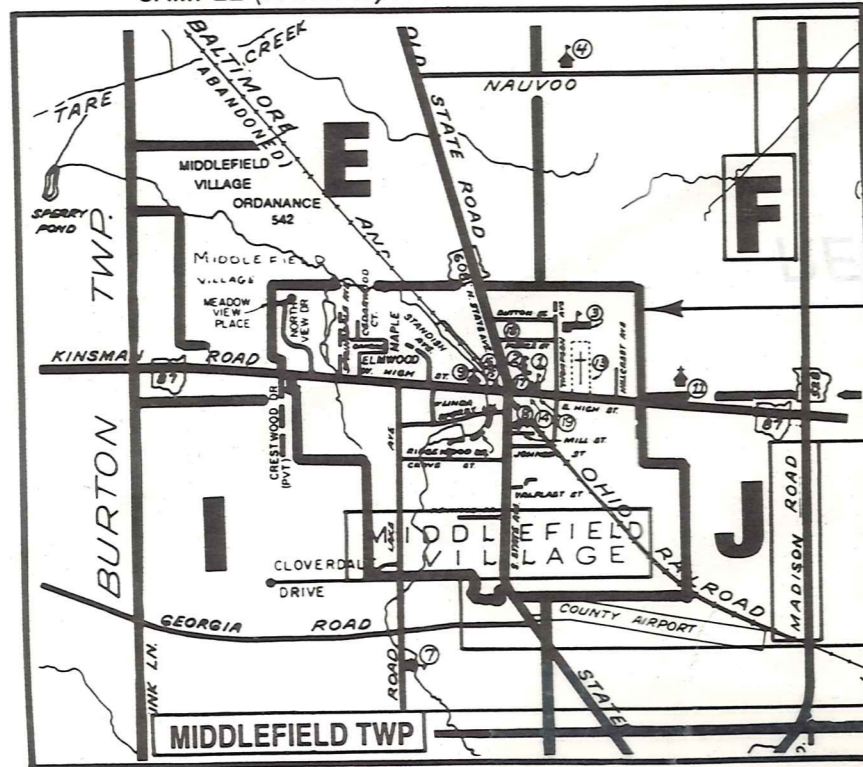
Village Name

Township Name

SAMPLE (PARTIAL) MAP PAGE



SAMPLE (PARTIAL) MUNICIPALITY INDEX MAP



## USE OF THE MAP VOLUME

- LOCATE THE GENERAL AREA OF INTEREST ON THE COUNTY INDEX MAP AND NOTE THE MUNICIPALITY NAME (TOWNSHIP OR VILLAGE).
  - REFER TO THE TABLE OF CONTENTS AND NOTE THE BEGINNING ATLAS PAGE NUMBER FOR THE MUNICIPALITY OF INTEREST.
  - TURN TO THE PAGE INDICATED, ON THIS PAGE WILL APPEAR AN INDEX MAP FOR THAT MUNICIPALITY.
  - LOCATE THE GENERAL AREA OF INTEREST AND NOTE THE MAP PAGE NUMBER. THIS MAY BE EITHER A LETTER OR A NUMBER.
  - MAP PAGES ARE IN ALPHABETICAL (OR NUMERICAL) SEQUENCE FOLLOWING THE MUNICIPALITY INDEX MAP. FOLLOW SEQUENCE TO THE MAP PAGE INDICATED.
  - LOCATE SPECIFIC PARCEL OF INTEREST AND NOTE THE DESIRED INFORMATION.
- NOTE: ON SOME MAPS YOU MAY BE REFERRED TO A DETAIL SHEET SHOWING AN ENLARGEMENT OF THE AREA. THESE MAPS ARE FOUND AT THE END OF THE REGULAR MAP PAGES IN EACH MUNICIPALITY IN EITHER ALPHABETICAL OR NUMERICAL SEQUENCE.
- NOTE: CHARDON VILLAGE HAS TITLE SHEETS. TO LOCATE OWNERS NAME, NOTE THE PARCEL NUMBER, REFER TO THE TITLE PAGE FOLLOWING THE MAP OF INTEREST, FOLLOW NUMERICAL SEQUENCE TO THE PARCEL NUMBER OF INTEREST AND NOTE THE DESIRED INFORMATION. IN ALL OTHER MUNICIPALITIES THE OWNERS NAME APPEARS ON THE MAP PAGE.